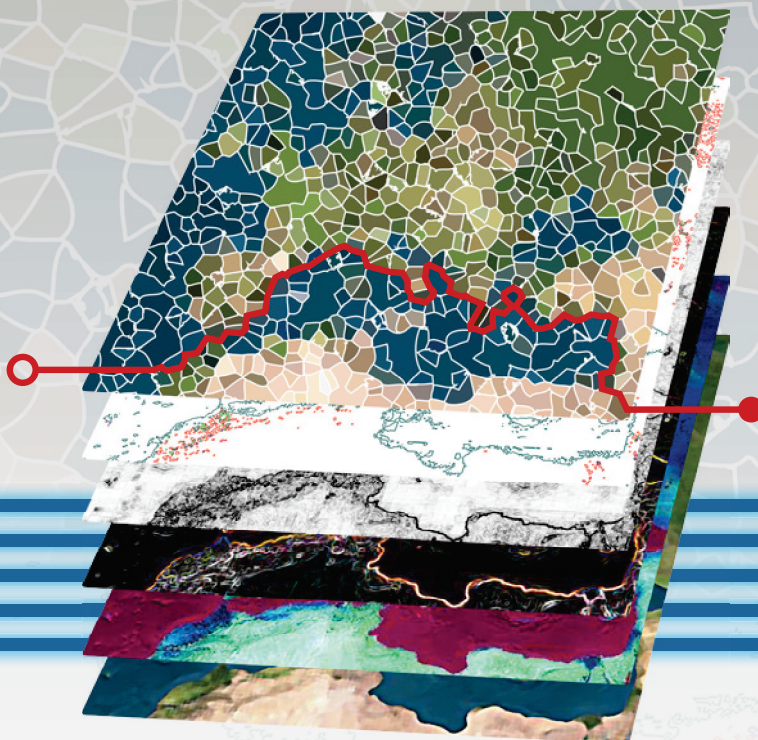


# 5<sup>th</sup> GEOBIA

21 - 24 MAY 2014 • MAKEDONIA PALACE HOTEL  
THESSALONIKI • GREECE



[www.geobia2014.web.auth.gr](http://www.geobia2014.web.auth.gr)

## Book of Abstracts

Hosted by .....



ARISTOTLE  
UNIVERSITY OF  
THESSALONIKI



FOREST MANAGEMENT  
AND REMOTE SENSING

Under the Auspices .....



MINISTRY OF  
ENVIRONMENT  
ENERGY &  
CLIMATE  
CHANGE



HELLENIC REPUBLIC  
Ministry of Education & Religious Affairs



HELLENIC REPUBLIC  
Ministry of Rural Development and Food



CITY OF THESSALONIKI

ISSN: 2241-1224



Aristotle University of  
Thessaloniki, Greece



open  
source  
journal

e-Journal

# South-Eastern European Journal of Earth Observation and Geomatics

Vo3 No2S  
May 2014

**GEOBIA 2014  
Advancements,  
trends and  
challenges,  
5th Geographic  
Object-Based Image  
Analysis Conference,  
Thessaloniki,  
Greece, May 21-24,  
2014**

Guest Editors:

Ioannis Gitas

Giorgios Mallinis

Petros Patias

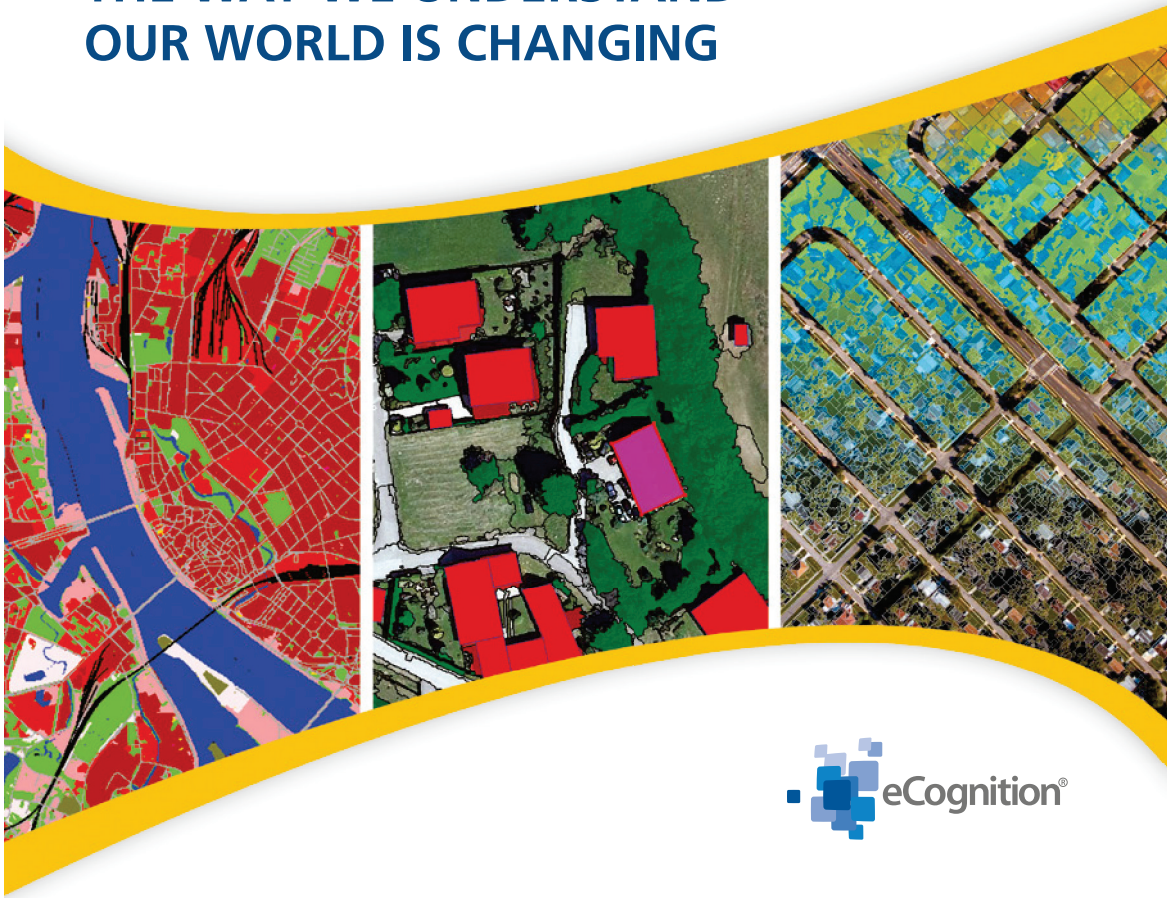
Dimitris Stathakis

Georgios Zalidis

**Special  
Thematic  
Issue**



# THE WAY WE UNDERSTAND OUR WORLD IS CHANGING



## MASTER GEOSPATIAL DATA FUSION AND ANALYSIS

Trimble® eCognition®, an object based image analysis software, is designed to improve, accelerate and automate the interpretation of images and geospatial data for environmental monitoring, resource development, infrastructure management and global security.

The new eCognition version 9, imports a variety of geospatial data, such as images, point clouds and GIS vectors, fusing them together into a rich stack of geodata for analysis. eCognition 9 takes simplification and integration to a new level.

FOR MORE INFORMATION AND FREE DEMO SOFTWARE VISIT [WWW.ECOGNITION.COM](http://WWW.ECOGNITION.COM)

**transforming** the way the world works

© 2014, Trimble Navigation Limited. All rights reserved. Trimble and the Globe & Triangle logo are trademarks of Trimble Navigation Limited, registered in the United States and in other countries. All other trademarks are the property of their respective owners.



## Table of Contents

A welcome note by the Chairman of the Organising Committee .....	4
Foreword .....	5
Committees .....	6
Thank you Sponsors .....	8
Useful Information .....	9
Keynote Speakers .....	15
Orals .....	25
THEMATIC SESSION I: O.T1 - Classification .....	27
THEMATIC SESSION II: O.T2 - Change Detection .....	39
THEMATIC SESSION III: O.T3 - Urban Analysis .....	47
THEMATIC SESSION IV: O.T4 - Disaster Management Applications .....	61
THEMATIC SESSION V: O.T5 - Environmental Applications .....	69
THEMATIC SESSION VI: O.T6 - Accuracy Assessment .....	83
THEMATIC SESSION VII: O.T7 - Forest Analysis .....	93
THEMATIC SESSION VIII: O.T8 - Pixel-vs-Object .....	109
THEMATIC SESSION IX: O.T9 - Segmentation .....	113
THEMATIC SESSION X: O.T10 - Feature Extraction .....	135
THEMATIC SESSION XI: O.T11 - New Data & Sensors .....	141
THEMATIC SESSION XII: O.T12 - Geographic Object-Based Classification and Modelling .....	147
THEMATIC SESSION XIII: O.T13 - Methodological Issues and Challenges .....	155
THEMATIC SESSION XIV: O.T14 - Multitemporal Analysis .....	163
THEMATIC SESSION XV: O.T15 - GIS-Mapping .....	169
THEMATIC SESSION XVI: O.T16 - Automatic Feature Extraction for Specific Targets .....	177
Posters .....	185
Index .....	251
Notes .....	259

## DATA MINING AND OBJECT BASED IMAGE ANALYSIS APPLIED TO SOYBEAN AREAS CLASSIFICATION THROUGH TIME-SERIES TM/ETM + IMAGES

**B. Schultz<sup>1</sup>, G. Bertani<sup>1</sup>, M.A. Vieira<sup>1</sup>, I.D.R. Eberhardt<sup>1</sup>, A.R. Formaggio<sup>1</sup>, A.J.B. Luiz<sup>2</sup>, C. Atzberger<sup>3</sup>**

<sup>1</sup> Remote Sensing Division, Brazilian National Institute for Space Research, Brazil

<sup>2</sup> Brazilian Agricultural Research Corporation – EMBRAPA Environment, Ministry of Agriculture, Livestock and Food Supply, Brazil

<sup>3</sup> Institute of Surveying, Remote Sensing and Land Information, Department of Landscape, Spatial and Infrastructures Science, University of Natural Resources and Life Sciences, Vienna, Austria

**KEYWORDS:** Multiresolution segmentation, J48, agricultural statistics, soybean cultures

---

This study was conducted in order to map soybean plantations through the use of temporal series of ETM + / Landsat-7, together with the approach Object Based Image Analysis (OBIA) and Data Mining (DM). This approach allowed using the knowledge about the characteristics of Soybean cycle in the classification process. The study area corresponds to three cities in the state of São Paulo, namely: Guara, Ipuã and San Joaquin Barra. To generate image objects was used the Multiresolution Segmentation algorithm, implemented on the E-cognition platform. The knowledge model was obtained from the J48 algorithm, which generated a decision tree and was implemented in the WEKA platform. The training set used to generate the decision tree corresponds to the areas identified in Soybean growth stages on the following dates: September and October (2000); February and March (2001). After obtaining the knowledge model a thematic map of soybean was generated through the Hierarchical Classification Algorithm in E-cognition platform. The map had overall accuracy and kappa coefficient equal to 98.69% and 0.97, respectively. The results show that the classification of soybeans areas, performed through the application of the approach DM + OBIA in temporal series of TM / ETM +, can be considered efficient, and it is a promising alternative to the process of agricultural monitoring.