

LETTER • OPEN ACCESS

## Spatio-temporal variation in dry season determines the Amazonian fire calendar

To cite this article: Nathália S Carvalho *et al* 2021 *Environ. Res. Lett.* **16** 125009

View the [article online](#) for updates and enhancements.

### You may also like

- [Infrastructure performance of irrigation canal to irrigation efficiency of irrigation area of Candi Limo in Mojokerto District](#)  
S Kisananto, R R R Hadiani and C Ikhsan
- [Water Status on Micro/Nano Gap Between Galvanic Arrays and Flowing Current Around 100% in Relative Humidity](#)  
Eiji Terada, Yukihiko Sakamoto and Jin Kawakita
- [Who is the new sheriff in town regulating boreal forest growth?](#)  
A Park Williams, Chonggang Xu and Nate G McDowell

ENVIRONMENTAL RESEARCH  
LETTERS

## LETTER

Spatio-temporal variation in dry season determines the  
Amazonian fire calendar

## OPEN ACCESS

RECEIVED  
3 August 2021REVISED  
29 October 2021ACCEPTED FOR PUBLICATION  
16 November 2021PUBLISHED  
6 December 2021

Original content from  
this work may be used  
under the terms of the  
[Creative Commons  
Attribution 4.0 licence](#).

Any further distribution  
of this work must  
maintain attribution to  
the author(s) and the title  
of the work, journal  
citation and DOI.



Nathália S Carvalho<sup>1,2,\*</sup> , Liana O Anderson<sup>1,3</sup> , Cássio A Nunes<sup>4</sup> , Ana C M Pessoa<sup>1,2</sup> ,  
Celso H L Silva Junior<sup>1,2,5</sup> , João B C Reis<sup>1,3</sup> , Yosio E Shimabukuro<sup>1,2</sup> , Erika Berenguer<sup>6,7</sup> , Jos Barlow<sup>4,7</sup>   
and Luiz E O C Aragão<sup>1,2,8</sup>

<sup>1</sup> Tropical Ecosystems and Environmental Sciences Laboratory (TREES), São José dos Campos, Brazil

<sup>2</sup> Earth Observation and Geoinformatics Division, National Institute for Space Research, São José dos Campos, Brazil

<sup>3</sup> National Center for Monitoring and Early Warning of Natural Disasters, São José dos Campos, SP, Brazil

<sup>4</sup> Departamento de Ecologia e Conservação, Universidade Federal de Lavras, Lavras, Brazil

<sup>5</sup> Departamento de Engenharia Agrícola, Universidade Estadual do Maranhão (UEMA), São Luís, Brazil

<sup>6</sup> Environmental Change Institute, School of Geography and the Environment, University of Oxford, Oxford, United Kingdom

<sup>7</sup> Lancaster Environment Centre, Lancaster University, Lancaster, United Kingdom

<sup>8</sup> University of Exeter, Exeter, United Kingdom

\* Author to whom any correspondence should be addressed.

E-mail: [nsc.nathaliacarvalho@gmail.com](mailto:nsc.nathaliacarvalho@gmail.com)

**Keywords:** dry season, dry season length, fire season, fire peak, deforestation

Supplementary material for this article is available [online](#)

**Abstract**

Fire is one of the main anthropogenic drivers that threatens the Amazon. Despite the clear link between rainfall and fire, the spatial and temporal relationship between these variables is still poorly understood in the Amazon. Here, we stratified the Amazon basin according to the dry season onset/end and investigated its relationship with the spatio-temporal variation of fire. We used monthly time series of active fires from 2003 to 2019 to characterize the fire dynamics throughout the year and to identify the fire peak months. More than 50% (32 246) of the annual mean active fires occurred in the peak month. In 52% of the cells, the peaks occurred between August–September and in 48% between October–March, showing well-defined seasonal patterns related to spatio-temporal variation of the dry season. Fire peaks occurred in the last two months of the dry season in 67% of the cells and in 20% in the first month of the rainy season. The shorter the dry season, the more concentrated was the occurrence of active fires in the peak month, with a predominance above 70% in cells with a dry season between one and three months. We defined a Critical Fire Period by identifying the consecutive months that concentrated at least 80% of active fires in the year. This period included two to three months between January and March in the northwest, and in the far north it lasted up to seven months, ending in March–April. In the south, it varied between two and three months, starting in August. In the northeast, it was three to four months, between August and December. By quantifying the role of the dry season in driving fire seasonality across the Amazon basin, we provide recommendations to monitor fire dynamics that can support decision makers in management policies and measures to avoid environmentally or socially harmful fires.

**1. Introduction**

Anthropogenic activities and extreme droughts are the main drivers of fire in the Amazon (Aragão *et al* 2007, Cochrane and Laurance 2008). Amazonian fires are strongly linked to deforestation (Aragão *et al* 2008) and public land grabbing (Azevedo-Ramos and

Moutinho 2018). Fire is also used for pasture maintenance and weed control by cattle ranchers and in family farming by smallholders, indigenous and traditional peoples (Barlow *et al* 2020). In addition, fires can also accidentally advance to nearby forest areas and in a fire-sensitive system as the Amazon Forest, result in increased tree mortality (Barlow *et al* 2003,

Pontes-Lopes *et al* 2021), changes in forest structure and composition (Bond and Keeley 2005, Barlow and Peres 2008) and long-term reductions in carbon stocks (Silva *et al* 2018). The synergy between anthropogenic ignition sources and extreme droughts tends to intensify forest fires, resulting in a 50% increase in carbon emissions compared to non-drought years (Aragão *et al* 2018). The societal consequences of fires in the Amazon are evidenced by the harming of the health of local populations (Smith *et al* 2014, Reddington *et al* 2015) and by the huge economic losses, with regional estimates indicating a loss of  $9.07 \pm 2.46\%$  of gross domestic product, in southwestern Brazilian Amazon (Campanharo *et al* 2019).

Understanding of the fire seasonality is critical for a better allocation of resources for socioeconomic and environmental policies, especially when budgets for these proposals are restricted. Indeed, the scarcity of financial resources is a reality faced by several countries in the Amazon basin (Suarez *et al* 2018, Levis *et al* 2020, Hope 2021). Thus, actions taken in key months of the fire calendar could help strengthen the tracking of criminal fires and reduce the risk of fires escaping from anthropogenic areas to surrounding forests. Furthermore, knowing the fire seasonality is equally important to define the periods when controlled burning is allowed, an essential practice for people who depend on it to guarantee their livelihoods (Mistry *et al* 2016, Eloy *et al* 2018), and can have the right of use ensured by law (Brasil 2012). Clarifying fire seasonality is also necessary to reduce uncertainty in estimates of fire-associated carbon emissions in the Amazon, as fire in the onset, middle and end of the dry season have different behaviours (Rissi *et al* 2017, Amaral *et al* 2019). Combustion becomes more efficient as the dry season progresses, resulting in reduced carbon monoxide and increased carbon dioxide emissions (Hoffa *et al* 1999).

Fire dynamics are often described in terms of the size, frequency or duration of burn scars (Andela *et al* 2019). However, despite the clear seasonal coupling between rainfall and fire in the Amazon (Aragão *et al* 2008), marked spatial differences in the onset, length, and peak of the dry seasons (Moura *et al* 2015, Anderson *et al* 2018, Berenguer *et al* 2021), and the strong interannual variation in the hydrological cycle (Villar *et al* 2009), this variability is rarely included in research. For example, researchers often depict a generalized dry season that has been fixed between July–September (Saleska *et al* 2007, Samanta *et al* 2010, Xu *et al* 2011), July–October (Cox *et al* 2008, Marengo *et al* 2011) and August–October (Xu *et al* 2020). However, when spatio-temporal variation in the rainfall regime over the Amazon is disregarded, variations in the fire dynamics can consequently be misinterpreted (Berenguer *et al* 2021). Few studies have addressed the fire occurrence according to regional dry season patterns (McDaniel *et al* 2005, Romero-Ruiz *et al* 2010, Armenteras-Pascual *et al* 2011, Alencar *et al* 2015),

but knowledge of this relationship is still unclear for the entire Amazon.

Here, we investigated in detail the interaction between rainfall and fire across the Amazon. With a spatio-temporal stratification of the dry season, we seek to overcome the constraints in understanding the fire dynamics imposed by the variability of the rainfall regime. We aimed to (a) produce spatially explicit maps of the Amazon basin according to the onset, end, and length of the dry season, (b) characterize the fire seasonality according to the variation of the dry season, and (c) define the months with the highest occurrence of active fires, which could be used to inform policy. Given that we are interested in the timing of the fire and not what is burning, we do not attempt to divide fires into their different types. We discuss our results showing the importance of considering the spatio-temporal variations in the dry season across the Amazon to improve the monitoring of the fire occurrence and provide recommendations that can be useful for decision-makers in the strategic management planning across the fire season.

## 2. Methods

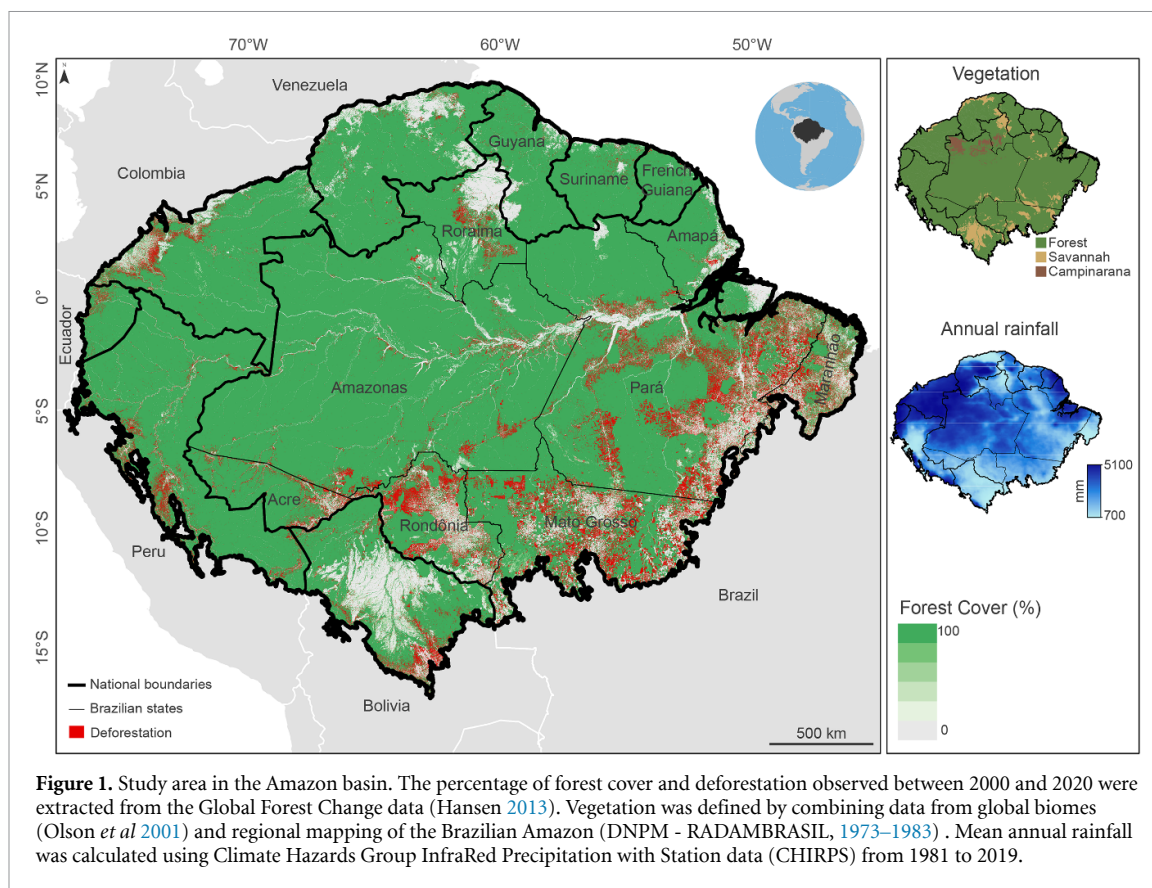
### 2.1. Study area

The study area encompasses an area above 6.5 million km<sup>2</sup> of the Amazon basin, including seven countries in South America, with Brazil accounting for the largest area, covering 63% (figure 1). About 31% is concentrated in the Andean countries Peru (9%), Colombia (7%), Venezuela (7%), Bolivia (7%) and Ecuador (1%). The remaining area occurs in Guyana (3%), Suriname (2%) and French Guiana (1%). In addition to forest areas, savanna patches occur mainly in Bolivia, in the far north of Brazil and Venezuela (figure 1). The Amazon has one of the highest rainfall regimes globally (Villar *et al* 2009), reaching annual values above 5000 mm in some parts of the basin (figure 1).

### 2.2. Data and analysis

#### 2.2.1. Stratifying the Amazon basin according to dry season variation

We calculated the mean monthly rainfall of each pixel using a 39 year time series (1981–2019) from Climate Hazards Group InfraRed Precipitation with Station data (CHIRPS). The CHIRPS algorithm incorporates satellite data, precipitation estimates, and records of *in situ* pluviometric stations, providing a product since 1981 with daily frequency and spatial resolution of 5.4 km (Funk *et al* 2015). This is a recent dataset, which has already performed well in several regions of the world (Duan *et al* 2016, Katsanos *et al* 2016, Perdígón-Morales *et al* 2018). For the Amazon, the validation of these data showed that CHIRPS explains 73% of the data from rain gauge stations (Anderson *et al* 2018).



**Figure 1.** Study area in the Amazon basin. The percentage of forest cover and deforestation observed between 2000 and 2020 were extracted from the Global Forest Change data (Hansen 2013). Vegetation was defined by combining data from global biomes (Olson *et al* 2001) and regional mapping of the Brazilian Amazon (DNPM - RADAMBRASIL, 1973–1983). Mean annual rainfall was calculated using Climate Hazards Group InfraRed Precipitation with Station data (CHIRPS) from 1981 to 2019.

We resampled the data to a spatial resolution of 10 km using the bilinear method. We adopted a threshold of 100 mm to define the dry season, as this is the mean monthly evapotranspiration value of tropical forests (Shuttleworth 1989, Rocha *et al* 2004, Von Randow *et al* 2004). With the persistence of rainfall below 100 mm, evapotranspiration exceeds rainfall, which can be used as an indicator of water deficit in tropical forests (Malhi *et al* 2002, Aragão *et al* 2007). This threshold is also in accordance with the value considered for Amazonian savannas (Biddulph and Kellman 1998). We defined the dry season timing by grouping pixels that share the same month for the onset and end of the dry season. We defined the dry season length as the number of consecutive months with rainfall lower than 100 mm. The differentiation between timing and length of the dry season is important because pixels with the same dry season length can have a different dry season timing. For example, if in a pixel the dry season began in June and ended in September, it has a different dry season timing from a pixel that had the onset of the dry season in May and the end in August, although both have a four-month dry season length. All raster files of the dry season (onset, end, and length) are available at Zenodo (<https://doi.org/10.5281/zenodo.5706455>).

### 2.2.2. Fire seasonality

We used active fires data from the Fire Information for Resource Management System, available between

2003 and 2019 (NASA 2020). We used the standard product of the Aqua/MODIS Collection 6 (Giglio *et al* 2018), which comprises daily observations and represents the centre of a pixel with a spatial resolution of 1 km. We only considered active fires with a confidence level above 80%.

To characterize the fire seasonality in each cell, we calculated the mean of cumulative active fires on the annual and monthly scales. We also calculated the monthly percentage of fire, expressed as the mean (2003–2019) of the percentage ratio between the number of active fires in each month and the total active fires accumulated in the respective year. We defined the fire peak month as the month with the highest monthly percentage of fire.

### 2.2.3. Critical fire period

To define Critical Fire Periods across the Amazon, (a) we classified the cells with fire activity considering the dry season regions, which were previously defined according to the dry season timing, (figure S1 available online at [stacks.iop.org/ERL/16/125009/mmedia](https://stacks.iop.org/ERL/16/125009/mmedia)) and then, (b) we used the k-means clustering method (MacQueen 1967) to group the regions according to similar behaviour in terms of the monthly percentage of fire. In this step, we first calculated the optimal number of clusters, expressed as the number of clusters for which the decay still results in a high differentiation from the others. Then, the Euclidean distance was considered for clustering

in the k-means method, such that regions of the same cluster have high intraclass similarity and low interclass similarity for the other clusters (Kassambara 2017). For each region of each cluster, we defined the Critical Fire Period as the consecutive months in which the sum of the monthly percentage of fire was above 80%. This threshold was defined to capture both the period of maximum fire activities and a minimum number of months that can be used for strategic planning (figure S2).

### 3. Results

#### 3.1. Spatio-temporal variation of the dry season

The seasonal variation in rainfall was spatially distributed, resulting in 74 regions with different dry season timings (figures 2 and S1). There is no dry season in 21% of the Amazon, with the largest area concentrated close to the equator, northwest of the basin (figure 2 and table S1). For the remaining area, we observed the expected opposite seasonal patterns between the north and south hemispheres. The dry season between May and September represents 41% of the area and covers most of the basin (figures 2(a) and (b)). In the northern hemisphere, in the west part, the dry season occurs between November and April, while in the east, it is concentrated between August and December, encompassing 7% and 14% of the area, respectively (figures 2(a) and (b)). In 58% of the Amazon, the dry season length varied among three (20%), four (17%), and five (21%) months (figure 2(c) and table S1). The shortest dry season lengths, one and two months, covered 14% of the basin and were adjacent to the aseasonal region. Dry season length with more than five months represented only 6% of the area and was restricted mainly to the north and northeast of the basin (figure 2(c) and table S1).

#### 3.2. Spatio-temporal relationship between the dry season and fire occurrence

From 2003 to 2019, an annual average of 63 710 ( $\pm 31\,088$ ) active fires were observed in an area that covered 42% of the Amazon (figure 3(a) and table 1). The annual mean was less than two active fires in 62% of cells, corresponding to 18% of observations (table 1). Although only 10% of the cells had more than six active fires, they accounted for 39% of the annual mean (24 752, table 1).

Considering the distribution of fire activity throughout the year, more than half of the annual mean active fires (32 246) occurred in the peak month of each cell, (table S2). In 43% of the cells, 30% to 50% of the monthly percentage of fire of the year occurred in the peak month (figure 3(b) and table 2(a)). These contributions were greater in cells with up to six active fires in the peak month (table 2(b)). Cells with a monthly percentage of fire in the peak month between 50% and 70% added up to 28% of the cells, with

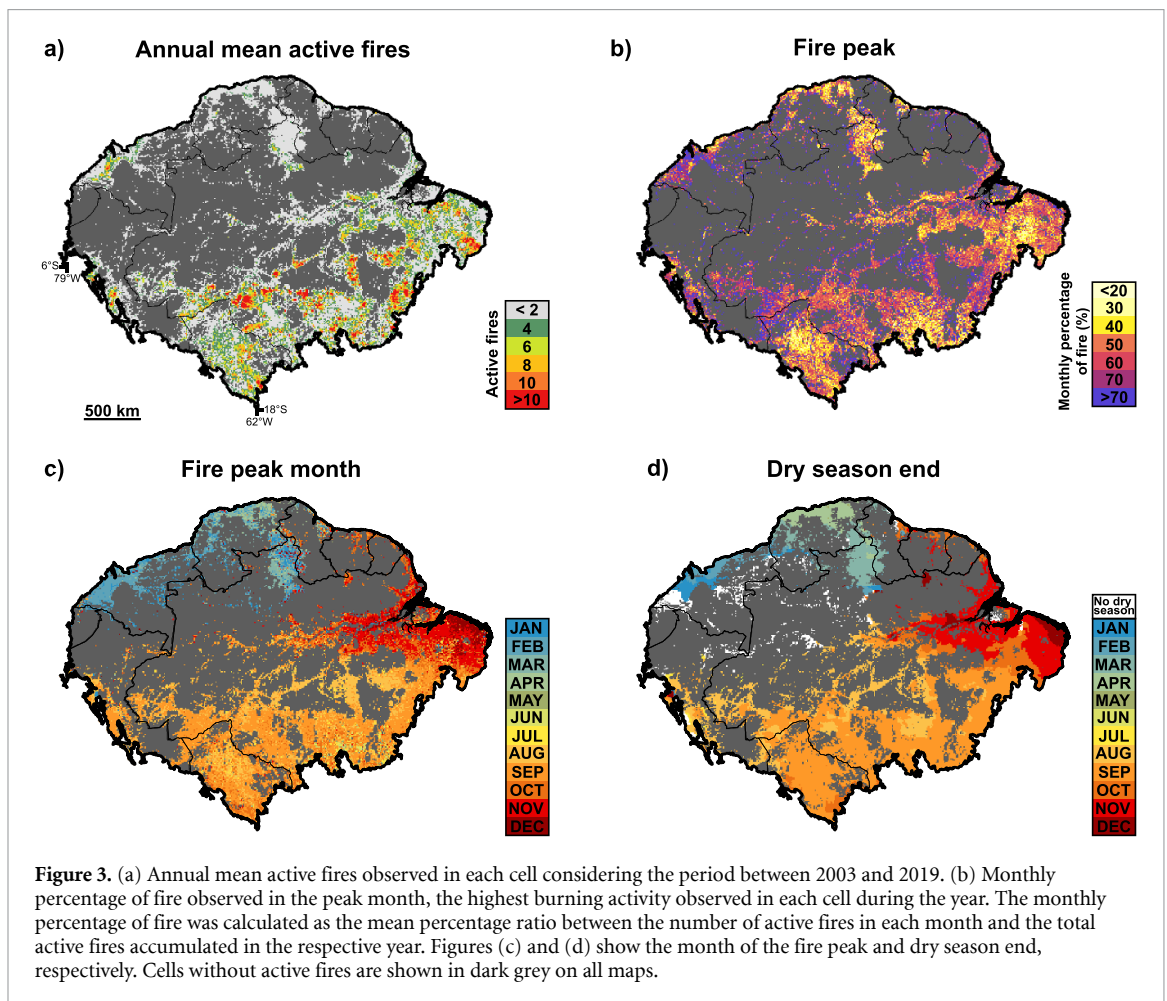
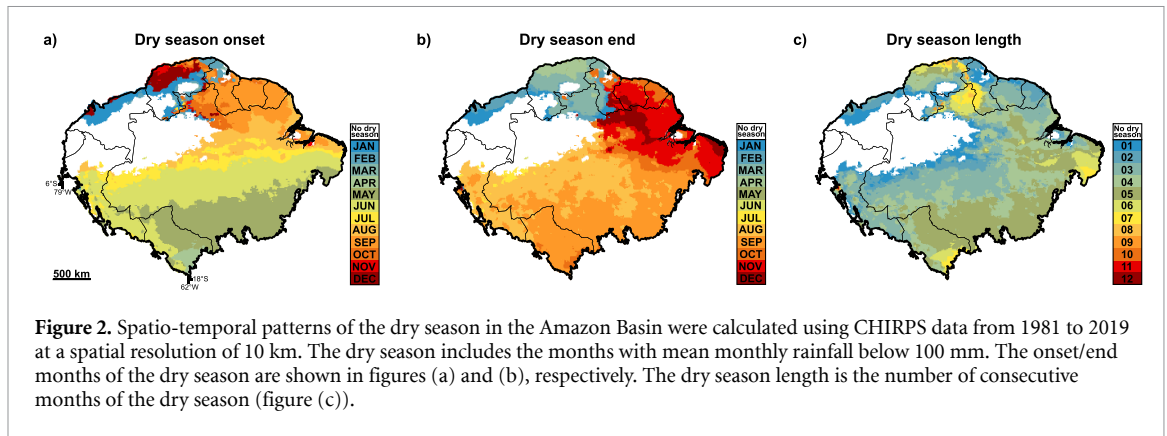
the highest occurrence of these percentages in cells with more than six active fires in the month with the highest burning activity (figure 3(b) and table 2). Furthermore, the shorter the dry season length, the more concentrated the burning activity was in the peak month, with a predominance of the monthly percentage of fire above 70% in cells with a dry season varying between zero and three months (figure 4).

We observed two opposite fire seasons in the northern and southern hemispheres, concentrated at the beginning and end of the year, respectively (figure S3). Furthermore, we observed a well-defined spatio-temporal relationship between the fire peak and the dry season end (figures 3(c) and (d)). Similar to dry season end, the fire peak month showed three clear patterns throughout the basin with different seasons among the south, north, and eastern Amazon (figures 3(c), (d) and table S3). In 52% of the cells, mainly covering the centre-south of the basin, the fire peak occurred in August (17%) and September (35%), (figure 3(c) and table S3(a)). Concentrated in the eastern Amazon, 28% of the cells presented the fire peak in the last trimester of the year. In 14% of them, the peak occurred in October, 11% in November and 4% in December (figure 3(c) and table S3(a)). Conversely, in the north of the basin, the fire peak occurred in the first three months of the year, encompassing 14% of the cells distributed in January (4%), February (6%) and March (4%), (figure 3(c) and table S3(a)).

Regarding the time-lag to the dry season end, fire peaks were concentrated in the last two months of the dry season and the first month of the subsequent rainy season. In 47% of the cells that had a dry season defined, the fire peak and dry season end occurred in the same month (figures 3(c), (d) and table S4). Forty per cent of the cells had a one-month lag between the dry season end and the fire peak, of which 20% had a fire peak one month before the dry season end, and 20% had a fire peak in the month after the end of the dry season (figures 3(c), (d) and table S4). Considering the dry season length of the cells, the time-lag revealed a unimodal distribution for most lengths (figure 5). The greatest correspondence between the fire peak and the dry season end occurred in the dry season length of five months, accounting for 56% of the total cells (figure 5 and table S5). We also observed that the longer the dry season length, the greater the number of cells with the fire peak in the months before the end of the dry season (figure 5). Conversely, fire peaks after the dry season end were more frequent in cells with a dry season length less than three months, occurring mainly in the first month of the rainy season and representing 36% to 48% of the total of cells (figure 5 and table S5).

#### 3.3. Critical fire period

We found four clusters with clear spatial patterns distributed among the northwest (C1), north (C2),



**Table 1.** Cells with active fires were divided into six classes according to the number of active fires observed (<2, 2–4, 4–6, 6–8, 8–10 and >10). The table shows the total cells and annual mean active fires observed in each class.

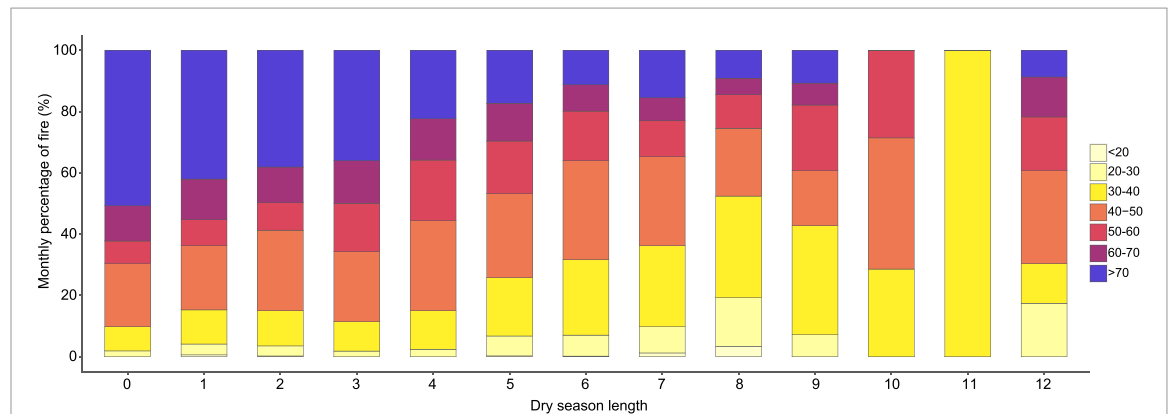
Class	Cells		Annual mean active fires	
	Number	%	Number	%
<2	17 322	62.47	11 637.94	18.27
2–4	5243	18.91	15 266.00	23.96
4–6	2453	8.85	12 053.65	18.92
6–8	1293	4.66	8987.06	14.11
8–10	664	2.39	5939.12	9.32
>10	753	2.72	9825.82	15.42
<b>Total</b>	<b>27 728</b>	<b>100</b>	<b>63 709.59</b>	<b>100</b>

**Table 2.** Fire occurrence in the peak month. Table 2(a) shows the distribution of cells with burning activity according to the monthly percentage of fire observed in the peak month (10%–20%, 20%–30%, 30%–40%, 40%–50%, 50%–60%, 60%–70% and >70%). Table 2(b) shows the cells divided into six classes according to accumulated of active fires in the peak month (<2, 2–4, 4–6, 6–8, 8–10 and >10) and their distribution considering the classes of the monthly percentage of fire.

		Monthly percentage of fire (%)							Total
(a)		10–20	20–30	30–40	40–50	50–60	60–70	>70	
	Cells	62	1269	4417	7474	4398	3392	6716	27 728
	%	0.22	4.58	15.93	26.95	15.86	12.23	24.22	100

		Monthly percentage of fire (%)							Total (%)	
(b)	Active fires	Cells	10–20	20–30	30–40	40–50	50–60	60–70	>70	
	<2	22 776	0.27	5.31	17.14	26.92	12.72	10.90	26.74	100
	2–4	3334	0.03	1.65	12.96	28.61	28.25	16.56	11.94	100
	4–6	1043	0.00	0.38	6.33	26.56	32.69	19.85	14.19	100
	6–8	391	0.00	0.00	3.32	18.93	38.36	25.58	13.81	100
	8–10	128	0.00	0.00	2.34	24.22	35.94	23.44	14.06	100
	>10	56	0.00	0.00	0.00	10.71	39.29	35.71	14.29	100
	Total	27 728	—	—	—	—	—	—	—	—



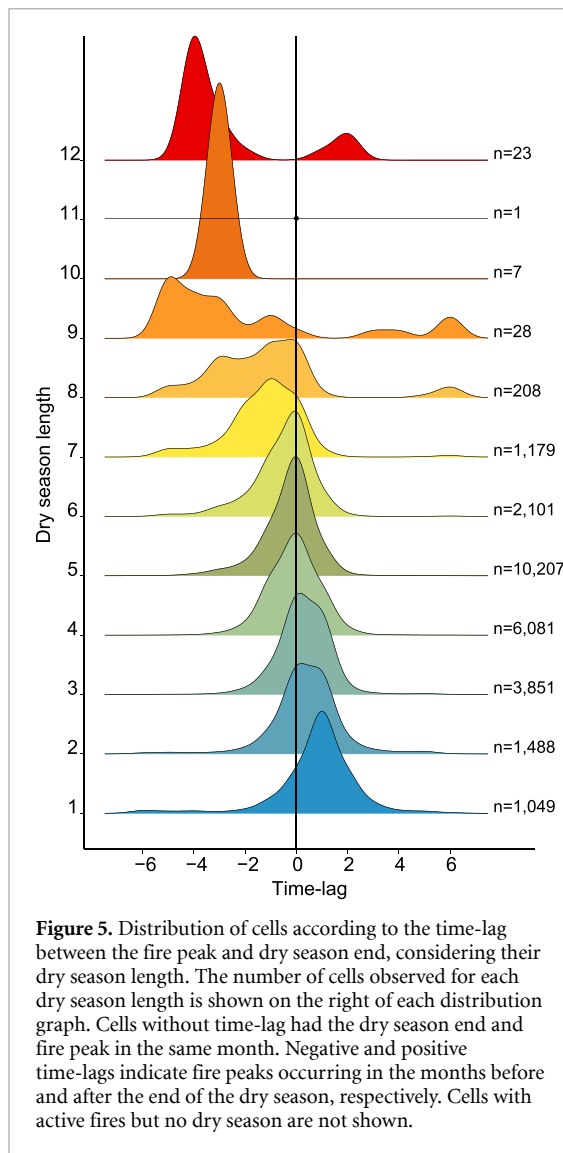
**Figure 4.** Cell distribution for each dry season length according to the monthly percentage of fire observed in the peak month (<20%, 20%–30%, 30%–40%, 40%–50%, 50%–60%, 60%–70% and >70%).

south (C3), and northeast (C4), (figures 6(a) and (b)). C1 covered regions with a dry season length of less than three months and occurring at the beginning of the year. This cluster concentrated 2.38% (1519) of the annual mean active fires, with most critical periods start in January and last two to three months, which can encompass the entire dry season, as well as the subsequent onset of the rainy season (figure 6(c)). The longest critical periods were observed in C2, located in the savanna areas of northern Brazil and Venezuela, ranging from four to seven months (figures 6(b) and (c)). C2 concentrated 4.68% (2984) of the annual mean active fires, and the regions with the highest burning activity had critical periods ending in March/April (figure 6(c)). These regions showed a dry season length of four to seven months and had a more equitable distribution of the monthly percentage of fire during the critical period, with values mainly ranging between 10% and 30% (figure 6(c)). C3 covered the basin area with the highest burning activity, with critical periods mainly beginning in August and lasting for two to

three months in the six regions that added up to 67% (42 837) of the annual mean active fires (figure 6(c)). In general, this period included the dry season end and the rainy season onset, with mean monthly percentages of fire for August, September, and October of 31%, 41% and 18%, respectively (figure 6(c)). The critical periods in C4 mainly included three to four months, ending in November/December. In the eight regions that concentrated 20% (12 766) of the annual mean active fires, the critical period was concentrated in the last two months of the dry season and the first month of the rainy season subsequent, accounting for about 62% and 23% of the monthly percentage of fire of the year, respectively.

#### 4. Discussion

Although the dry season plays a key role in the fire occurrence, the spatio-temporal relationship between these variables was not clear for the Amazon. We advanced on this issue, stratifying the Amazon into dry season regions and showing spatially explicit



results of the fire calendar for each of them. The characteristics of the dry season allowed us to describe a spatio-temporal variation beyond those widely reported in the main deforestation epicentres in the Amazon (Aragão *et al* 2008, Maeda *et al* 2009). We outline the importance of the fire calendar for (a) research examining fire dynamics, and (b) policy and management.

#### 4.1. Analytical importance

Our analysis clearly shows that fire analyses that disregards the seasonality of the dry season will misrepresent fire dynamics in several parts of the Amazon (Berenguer *et al* 2021). For example, an approach that uses the epicentres of deforestation to fix a single dry season for the entire basin, would misinterpret the fire dynamics in about 48% of the Amazon (table S3(a)). This includes some notable fire hotspots such as Roraima, the location of the 1997–98 megafires (Elvidge *et al* 2001); Colombia, where deforestation-related fires are expanding in recent years (Armenteras-Pascual *et al* 2011); and the eastern

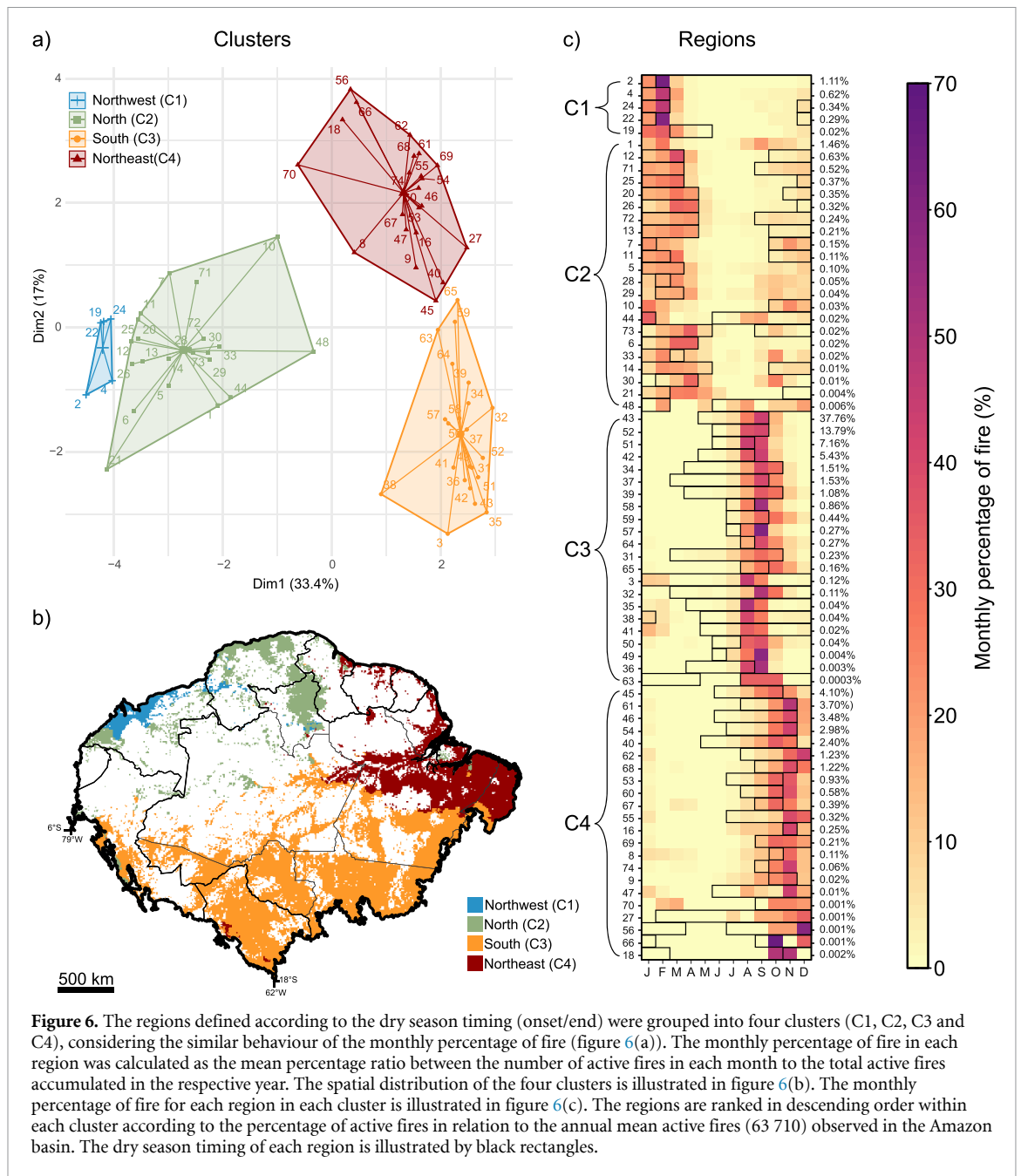
Amazon, including some of the deforested regions where both indigenous peoples and endemic species are highly threatened (Silva Junior *et al* 2020). The importance of these regions demonstrates the fact that Amazon-wide assessments of fire must consider seasonality.

Defining the present-day fire calendar could also help track how climate change could modify fire seasons, which is important given fire's key role in any large-scale forest dieback (Nobre *et al* 2016). Extreme droughts are affecting the Amazon with greater frequency, extension and severity (Panisset *et al* 2017). Furthermore, the dry season is becoming longer (Anderson *et al* 2018), with some regions in the Southern Amazon extending by one week per decade (Fu *et al* 2013). Changes in the timing and length of the dry season can modify the fire-prone period throughout the year, and the calendar presented could help to track changes in fire seasonality more clearly. In the last 40 years, some parts of the Amazon have seen a 34% reduction in rainfall between August and October, in addition to temperature increases of up to 2.5 °C (Gatti *et al* 2021). As our results show that 65% of the Amazon has a fire peak between August and October, these changes may be relevant to the fire calendar, particularly in the south and east regions (table S3(a)). In a trend towards a warmer dry season and even drier months, we can also expect a change in the fire type occurring, mainly due to increase of forest fires, as these conditions boost the flammability of the forest, making it a fire-prone system (Brando *et al* 2020). Linking fire seasonality to fire type is challenging (Chen *et al* 2013), but remains an important research priority to track the impacts of fire (Barlow *et al* 2020).

#### 4.2. Fire policy and practice

Fire prevention/fighting actions are more successful when a fire calendar is available (Anderson *et al* 2021, McKemey *et al* 2021), and its lack has led to actions that do not fully contemplate fire planning, prevention and mitigation. For example, in August 2019, the Brazilian Amazon was exposed to a large increase in fire that drew the world's attention (Barlow *et al* 2020). To curb this environmental crisis, the Brazilian government enacted decrees prohibiting the use of fire until the end of October. However, the control did not last long, and, as soon as the law validity expired, fire rose once again in November (Silveira *et al* 2020). Our analysis shows that territorial boundaries are not the most suitable limits for defining seasonally-dependent environmental policies, especially in countries like Brazil with continental dimensions. We defined three different fire periods in the Brazilian Amazon, and these should be considered for more specific policy making (figure 6 and table S6). This is especially important for a Bill to develop a National Integrated Fire Management Policy in Brazil, that has been in progress since





**Figure 6.** The regions defined according to the dry season timing (onset/end) were grouped into four clusters (C1, C2, C3 and C4), considering the similar behaviour of the monthly percentage of fire (figure 6(a)). The monthly percentage of fire in each region was calculated as the mean percentage ratio between the number of active fires in each month to the total active fires accumulated in the respective year. The spatial distribution of the four clusters is illustrated in figure 6(b). The monthly percentage of fire for each region in each cluster is illustrated in figure 6(c). The regions are ranked in descending order within each cluster according to the percentage of active fires in relation to the annual mean active fires (63 710) observed in the Amazon basin. The dry season timing of each region is illustrated by black rectangles.

2018 (Brasil 2018); our results would provide science-based guidelines to incorporate the seasonality and spatio-temporal variation of the fire in the region. The fire calendar can also improve policy at smaller scales: for example, Pará, one of the Brazilian states with the highest burning activity, has two distinct fire seasons (figure 6).

The fire calendar can also help define when prevention/firefighting actions need to be implemented in relation to the dry season onset. In general, the shorter the dry season length, the faster these actions must be taken to ensure its effectiveness. This is particularly important in countries such as Colombia, where favourable conditions for fire have a shorter duration, and for this reason, the burning activity

begins as soon as the dry season starts. Importantly, we found that longer dry seasons do not imply a longer Critical Fire Period, except for savanna areas where dry season length can extend beyond six months; these savannas have evolved with fire and active fires were distributed more evenly during the dry season. However, in most of the basin, if fire containment interventions were concentrated for three to four months, the reduction could reach more than 80%. Furthermore, it is interesting to note that Critical Fire Period can also cover the rainy season onset. As the fuel load at the end of the dry season is in its driest condition, the fire can still be sustained at the onset of the subsequent rainy season, stressing the need to monitor this period.

Our research did not differentiate fire types, which is an important element of determining fire containment measures. In many cases, fire is just a signal of deforestation (Armenteras-Pascual *et al* 2011); here, efforts should go on detecting and combating forest loss, not fire per se. Fire is often used by those who depend on it for their livelihood, consisting in these cases the only viable tool to guarantee food production. However, it is necessary to implement a fire calendar indicating allowed burning periods and how the practice should be carried out to reduce the risk of fires escaping into the remaining forests. At the same time, environmental enforcement must focus on the Critical Fire Periods, ensuring greater success in actions to curb illegal use of fire in agriculture. By defining these periods it is possible to make the best use of the scarce resources across Amazon countries (Suarez *et al* 2018, Levis *et al* 2020, Hope 2021), and would help them meet their commitments to reduce carbon emissions from forest degradation. Finally, to support decisions and policy makers, we provide a user-friendly interface with our results: [https://amazonianfirecalendar.shinyapps.io/fire\\_amazon/](https://amazonianfirecalendar.shinyapps.io/fire_amazon/).

## 5. Conclusion

In this study, we focused on clarifying how the dry and fire seasons are related in the Amazon. We show two key insights. First, by combining satellite-derived datasets of rainfall and active fires, we observed that the marked seasonality in the fire peaks was linked to the regional variation of the dry season end, which is consistent with the results of studies carried out on smaller scales in the northwest (Romero-Ruiz *et al* 2010, Armenteras-Pascual *et al* 2011), southeast (Brando *et al* 2016) and east (Alencar *et al* 2015) of the Amazon. This shows that assuming a single dry season for the entire Amazon is not suitable to characterize the fire occurrence. Second, our approach defines fire calendars for the Amazon, specifying different Critical Fire Periods. This could support policies and management interventions that target illegal agricultural fires, reduce deforestation and the subsequent burning, and support smallholders to develop fire-safe practices under changing climatic conditions. Further efforts are still needed to investigate the seasonality of each fire use and how extreme droughts influence their occurrence. However, the results achieved with this study already provide strategic information that can support decision makers in successful fire management plans and contingency actions.

## Data availability statement

The data that support the findings of this study are available upon reasonable request from the authors.

## Acknowledgments

This work was part of N S C 's PhD thesis and she thanks the Conselho Nacional de Desenvolvimento Científico e Tecnológico (CNPq 140379/2018-5) and the Coordenação de Aperfeiçoamento de Pessoal de Nível Superior- CAPES-PrInt/Research and Development in Tropical Meteorology for the scholarships granted. This study was also financed in part by CAPES – Finance Code 001. L O A thanks the MAP-Fire project (IAI—SGP-HW 016), Fundação de Amparo à Pesquisa do Estado de São Paulo (FAPESP, 2020/08916-8, 2016/02018-2), CNPq (441949/2018-5, 442650/2018-3, productivity scholarship: 314473/2020-3). C A N thanks CAPES (88887.469205/2019-00). A C M P thanks CNPq (140877/2018-5). C S J thanks CAPES (Code 001). J B C R thanks MAP-FIRE project (IAI—SGP-HW016). J B & E B thank the BNP Paribas Foundation's Climate and Biodiversity Initiative (Project Bioclimate), and CNPq-CAPES; Prevfogo-IBAMA 441949/2018-5 [Sem-Flama]. L E O C A thanks CNPq (productivity scholarship: 314416/2020-0).

## Conflict of interest

Authors declare no competing interests.

## ORCID iDs

Nathália S Carvalho  <https://orcid.org/0000-0003-0651-6967>

Liana O Anderson  <https://orcid.org/0000-0001-9545-5136>

Cássio A Nunes  <https://orcid.org/0000-0002-2783-0210>

Ana C M Pessôa  <https://orcid.org/0000-0003-3285-8047>

Celso H L Silva Junior  <https://orcid.org/0000-0002-1052-5551>

João B C Reis  <https://orcid.org/0000-0002-9095-1699>

Erika Berenguer  <https://orcid.org/0000-0001-8157-8792>

Jos Barlow  <https://orcid.org/0000-0003-4992-2594>

Luiz E O C Aragão  <https://orcid.org/0000-0002-4134-6708>

## References

- Alencar A, Brando P M, Asner G P and Putz F E 2015 Landscape fragmentation, severe drought and the new Amazon forest fire regime *Ecol. Soc. Am.* **25** 1493–505
- Amaral S S, Costa M A M, Soares Neto T G, Costa M P, Dias F F, Anselmo E, Dos Santos J C and de Carvalho J A 2019 CO<sub>2</sub>, CO, hydrocarbon gases and PM<sub>2.5</sub> emissions on dry season by deforestation fires in the Brazilian Amazonia *Environ. Pollut.* **249** 311–20

- Andela N, Morton D C, Giglio L, Paugam R, Chen Y, Hantson S, Van Der Werf G R and Randerson J T 2019 The Global Fire Atlas of individual fire size, duration, speed and direction *Earth Syst. Sci. Data* **11** 529–52
- Anderson L O et al 2021 An alert system for seasonal fire probability forecast for South American protected areas *Clim. Resilience Sustain.* n/a 1–19
- Anderson L O, Neto G R, Cunha A P, Fonseca M G, De Moura Y M, Dalagnol R, Wagner F H and De Aragão L E O E C 2018 Vulnerability of Amazonian forests to repeated droughts *Phil. Trans. R. Soc. B* **373** 1–12
- Aragão L E O C et al 2018 21st century drought-related fires counteract the decline of Amazon deforestation carbon emissions *Nat. Commun.* **9** 1–12
- Aragão L E O C, Malhi Y, Roman-Cuesta R M, Saatchi S, Anderson L O and Shimabukuro Y E 2007 Spatial patterns and fire response of recent Amazonian droughts *Geophys. Res. Lett.* **34** 1–5
- Aragão L O C, Malhi Y, Barbier N, Lima A, Shimabukuro Y, Anderson L and Saatchi S 2008 Interactions between rainfall, deforestation and fires during recent years in the Brazilian Amazonia *Phil. Trans. R. Soc.* **363** 1779–85
- Armenteras-Pascual D, Retana-Alumbreros J, Molowny-Horas R, Roman-Cuesta R M, Gonzalez-Alonso F and Morales-Rivas M 2011 Characterising fire spatial pattern interactions with climate and vegetation in Colombia *Agric. Forest Meteorol.* **151** 279–89
- Azevedo-Ramos C and Moutinho P 2018 No man's land in the Brazilian Amazon: could undesignated public forests slow Amazon deforestation? *Land Use Policy* **73** 125–7
- Barlow J, Berenguer E, Carmenta R and França F 2020 Clarifying Amazonia's burning crisis *Glob. Change Biol.* **26** 319–21
- Barlow J and Peres C A 2008 Fire-mediated dieback and compositional cascade in an Amazonian forest *Philos. Trans.: Biol. Sci.* **363** 1787–94
- Barlow J, Peres C A, Lagan B O and Haugaasen T 2003 Large tree mortality and the decline of forest biomass following Amazonian wildfires *Ecol. Lett.* **6** 6–8
- Berenguer E, Carvalho N, Anderson L O, Aragão L E O C, França F and Barlow J 2021 Improving the spatial-temporal analysis of Amazonian fires *Glob. Change Biol.* **27** 469–71
- Biddulph J and Kellman M 1998 Fuels and fire at savanna-gallery forest boundaries in Southeastern Venezuela *J. Tropical Ecol.* **14** 445–61
- Bond W J and Keeley J E 2005 Fire as a global 'herbivore': the ecology and evolution of flammable ecosystems *Trends Ecol. Evol.* **20** 387–94
- Brando P M, Oliveria-Santos C, Rocha W, Cury R and Coe M T 2016 Effects of experimental fuel additions on fire intensity and severity: unexpected carbon resilience of a neotropical forest *Glob. Change Biol.* **22** 2516–25
- Brando P, Macedo M, Silvério D, Rattis L, Paolucci L, Alencar A, Coe M and Amorim C 2020 Amazon wildfires: scenes from a foreseeable disaster *Flora* **268** 1–5
- Brasil 2012 Lei nº 12.651/2012. Código Florestal Brasileiro. Dispõe sobre a proteção da vegetação nativa
- Brasil 2018 Projeto de Lei Institui a Política Nacional de Manejo Integrado do Fogo (available at: [www.camara.leg.br/proposicoesWeb/prop\\_mostrarintegra?codteor=1703491&filename=PL+11276/2018](http://www.camara.leg.br/proposicoesWeb/prop_mostrarintegra?codteor=1703491&filename=PL+11276/2018))
- Campanharo W A, Lopes A P, Anderson L O, Da Silva T F M R and Aragão L E O C 2019 Translating fire impacts in Southwestern Amazonia into economic costs *Remote Sens.* **11** 1–24
- Chen Y, Morton D C, Jin Y, Gollatz G J, Kasibhatla P S, Van Der Werf G R, Defries R S and Randerson J T 2013 Long-term trends and interannual variability of forest, savanna and agricultural fires in South America *Carbon Manage.* **4** 617–38
- Cochrane M A and Laurance W F 2008 Synergisms among fire, land use, and climate change in the Amazon *Ambio* **37** 522–7
- Cox P M, Harris P P, Huntingford C, Betts R A, Collins M, Jones C D, Jupp T E, Marengo J A and Nobre C A 2008 Increasing risk of Amazonian drought due to decreasing aerosol pollution *Nature* **453** 212–5
- DNPM - RADAMBRASIL 1973–1983
- Duan Z, Liu J, Tuo Y, Chiogna G and Disse M 2016 Evaluation of eight high spatial resolution gridded precipitation products in Adige Basin (Italy) at multiple temporal and spatial scales *Sci. Total Environ.* **573** 1536–53
- Eloy L, Bilbao B A, Mistry J and Schmidt I B 2018 From fire suppression to fire management: advances and resistances to changes in fire policy in the savannas of Brazil and Venezuela *Geogr. J.* **185** 10–22
- Elvidge C D, Hobson V R, Baugh K E, Dietz J B, Shimabukuro Y E, Krug T, Novo E M L M and Echavarría F R 2001 DMSP-OLS estimation of tropical forest area impacted by surface fires in Roraima, Brazil: 1995 versus 1998 *Int. J. Remote Sens.* **22** 2661–73
- Fu R et al 2013 Increased dry-season length over southern Amazonia in recent decades and its implication for future climate projection *Proc. Natl Acad. Sci. USA* **110** 18110–5
- Funk C et al 2015 The climate hazards infrared precipitation with stations—a new environmental record for monitoring extremes *Nat. Sci. Data* **2** 1–21
- Gatti L V et al 2021 Amazonia as a carbon source linked to deforestation and climate change *Nature* **595** 388–93
- Giglio L, Boschetti L, Roy D P, Humber M L and Justice C O 2018 The Collection 6 MODIS burned area mapping algorithm and product *Remote Sens. Environ.* **217** 72–85
- Hansen M C 2013 High-resolution global maps of 21st-century forest cover change *Science* **342** 850–4
- Hoffa E A, Ward D E, Hao W M, Susott R A and Wakimoto R H 1999 Seasonality of carbon emissions from biomass burning in a Zambian savanna *J. Geophys. Res. Atmos.* **104** 13841–53
- Hope J 2021 The anti-politics of sustainable development: environmental critique from assemblage thinking in Bolivia *Trans. Inst. British Geogr.* **46** 208–22
- Kassambara A 2017 *Practical Guide to Cluster Analysis in R* (Taylor & Francis Group) pp 1–187
- Katsanos D, Retalis A and Michaelides S 2016 Validation of a high-resolution precipitation database (CHIRPS) over Cyprus for a 30-year period *Atmos. Res.* **169** 459–64
- Levis C, Flores B M, Mazzochini G G, Manhães A P, Campos-Silva J V, Borges de Amorim P, Peroni N, Hirota M and Clement C R 2020 Help restore Brazil's governance of globally important ecosystem services *Nat. Ecol. Evol.* **4** 172–3
- MacQueen J B 1967 Some methods for classification and analysis of multivariate observations. in: proceedings of the 5th Berkeley symposium on mathematical statistics and probability vol 1 (Statistics, University of California Press: Berkeley) pp 281–97
- Maeda E E, Formaggio A R, Shimabukuro Y E, Arcoverde G F B and Hansen M C 2009 Predicting forest fire in the Brazilian Amazon using MODIS imagery and artificial neural networks *Int. J. Appl. Earth Obs. Geoinf.* **11** 265–72
- Malhi Y, Pegoraro E, Nobre A D, Pereira M G P, Grace J, Culf A D and Clement R 2002 Energy and water dynamics of a central Amazonian rain forest *J. Geophys. Res.* **107** LBA45-1-LBA 45–17
- Marengo J A, Tomasella J, Alves L M, Soares W R and Rodríguez D A 2011 The drought of 2010 in the context of historical droughts in the Amazon region *Geophys. Res. Lett.* **38** 1–5
- McDaniel J, Kennard D and Fuentes A 2005 Smokey the tapir: traditional fire knowledge and fire prevention campaigns in lowland Bolivia *Soc. Nat. Resour.* **18** 921–31
- McKemy M B, Ens E J, Hunter J T, Ridges M, Costello O and Reid N C H 2021 Co-producing a fire and seasons calendar to support renewed Indigenous cultural fire management *Austral Ecol.* **46** 1011–29
- Mistry J, Bilbao B A and Berardi A 2016 Community owned solutions for fire management in tropical ecosystems: case

- studies from Indigenous communities of South America *Phil. Trans. R. Soc. B* **371** 20150174
- Moura Y M, Hilker T, Lyapustin A I, Galvão L S, Dos Santos J R, Anderson L O, Sousa C H R and Arai E 2015 Seasonality and drought effects of Amazonian forests observed from multi-angle satellite data *Remote Sens. Environ.* **171** 278–90
- NASA 2020 *Fire Information for Resource Management System (FIRMS)* (available at: <https://earthdata.nasa.gov/earth-observation-data/near-real-time/firms>)
- Nobre C A, Sampaio G, Borma L S, Castilla-Rubio J C, Silva J S and Cardoso M 2016 Land-use and climate change risks in the amazon and the need of a novel sustainable development paradigm *Proc. Natl Acad. Sci. USA* **113** 10759–68
- Olson D M *et al* 2001 Terrestrial ecoregions of the world: a new map of life on Earth *BioScience* **51** 933–8
- Panisset J S, Libonati R, Gouveia M P, Machado-silva F, França D A, França R A and Peres L F 2017 Contrasting patterns of the extreme drought episodes of 2005, 2010 and 2015 in the Amazon Basin *Int. J. Climatol.* **38** 1096–104
- Perdigón-Morales J, Romero-Centeno R, Pérez P O and Barrett B S 2018 The midsummer drought in Mexico: perspectives on duration and intensity from the CHIRPS precipitation database *Int. J. Climatol.* **38** 2174–86
- Pontes-Lopes A *et al* 2021 Drought-driven wildfire impacts on structure and dynamics in a wet Central Amazonian forest *Proc. R. Soc. B* **288** 20210094
- Reddington C L, Butt E W, Ridley D A, Artaxo P, Morgan W T, Coe H and Spracklen D V 2015 Air quality and human health improvements from reductions in deforestation-related fire in Brazil *Nat. Geosci.* **8** 768–71
- Rissi M N, Baeza M J, Gorgone-Barbosa E, Zupo T and Fidelis A 2017 Does season affect fire behaviour in the Cerrado? *Int. J. Wildland Fire* **26** 427–33
- Rocha H R, Goulden M L, Miller S D, Menton M C, Pinto L D V O, De Freitas H C, Adelaine M and Figueira S 2004 Seasonality of water and heat fluxes over a tropical forest in Eastern Amazonia *Source Ecol. Appl.* **14** 22–32
- Romero-Ruiz M, Etter A, Sarmiento A and Tansey K 2010 Spatial and temporal variability of fires in relation to ecosystems, land tenure and rainfall in savannas of northern South America *Glob. Change Biol.* **16** 2013–23
- Saleska S R, Didan K, Huete A R and Da Rocha H R 2007 Amazon forests green-up during 2005 drought *Science* **318** 612
- Samanta A, Ganguly S, Hashimoto H, Devadiga S, Vermote E, Knyazikhin Y, Nemani R R and Myneni R B 2010 Amazon forests did not green-up during the 2005 drought *Geophys. Res. Lett.* **37** 1–5
- Shuttleworth W J 1989 Micrometeorology of temperate and tropical forest *Phil. Trans. R. Soc. B* **324** 299–334
- Silva C V J *et al* 2018 Drought-induced Amazonian wildfires instigate a decadal-scale disruption of forest carbon dynamics *Phil. Trans. R. Soc. B* **373** 1–12
- Silva Junior C H L, Celentano D, Rousseau G X, de Moura E G, van Varga I D, Martinez C and Martins M B 2020 Amazon forest on the edge of collapse in the Maranhão State, Brazil *Land Use Policy* **97** 104806
- Silveira M V F *et al* 2020 Drivers of fire anomalies in the Brazilian Amazon: lessons learned from the 2019 fire crisis *Land* **9** 1–24
- Smith L T, Aragão L E O C, Sabel C E and Nakaya T 2014 Drought impacts on children's respiratory health in the Brazilian Amazon *Nat. Sci. Rep.* **4** 1–8
- Suarez A, Árias-Arévalo P A and Martínez-Mera E 2018 Environmental sustainability in post-conflict countries: insights for rural Colombia *Environ. Dev. Sustain.* **20** 997–1015
- Villar J C E, Ronchail J, Guyot J L, Cochonneau G, Naziano F, Lavado W, de Oliveira E, Pombosa R and Vauchel P 2009 Spatio-temporal rainfall variability in the Amazon basin countries (Brazil, Peru, Bolivia, Colombia, and Ecuador) *Int. J. Climatol.* **29** 1574–94
- Von Randow C *et al* 2004 Comparative measurements and seasonal variations in energy and carbon exchange over forest and pasture in South West Amazonia *Theor. Appl. Climatol.* **78** 5–26
- Xu L, Samanta A, Costa M H, Ganguly S, Nemani R R and Myneni R B 2011 Widespread decline in greenness of Amazonian vegetation due to the 2010 drought *Geophys. Res. Lett.* **38** 1–4
- Xu X, Jia G, Zhang X, Riley W J and Xue Y 2020 Climate regime shift and forest loss amplify fire in Amazonian forests *Glob. Change Biol.* **26** 5874–85