



Assessment of the data assimilation framework for the Rapid Refresh Forecast System v0.1 and impacts on forecasts of convective storms

Ivette H. Banos¹, Will D. Mayfield², Guoqing Ge³, Luiz F. Sapucci⁴, Jacob R. Carley⁵, and Louisa Nance²

¹Graduate Program in Meteorology, National Institute for Space Research, São José dos Campos, São Paulo, Brazil

²National Center for Atmospheric Research, Boulder, CO, USA

³NOAA Global Systems Laboratory, and Cooperative Institute for Research in Environmental Sciences, CU Boulder, Boulder, CO, USA

⁴Center for Weather Forecasts and Climate Studies, National Institute for Space Research, São Paulo, Brazil

⁵NOAA/NCEP Environmental Modeling Center, College Park, MD, USA

Correspondence: Ivette Hernández Baños (ivette.banos@inpe.br)

Abstract. The Rapid Refresh Forecast System (RRFS) is currently under development and aims to replace the National Centers for Environmental Prediction (NCEP) operational suite of regional and convective scale modeling systems in the next upgrade. In order to achieve skillful forecasts comparable to the current operational suite, each component of the RRFS needs to be configured through exhaustive testing and evaluation. The current data assimilation component uses the Gridpoint Statistical Interpolation (GSI) system. In this study, various data assimilation algorithms and configurations in GSI are assessed for their impacts on RRFS analyses and forecasts of a squall line over Oklahoma on 4 May 2020. Results show that a baseline RRFS run without data assimilation is able to represent the observed convection, but with stronger cells and large location errors. With data assimilation, these errors are reduced, especially in the 4 and 6 h forecasts using 75 % of the ensemble background error covariance (BEC) and with the supersaturation removal function activated in GSI. Decreasing the vertical ensemble localization radius in the first 10 layers of the hybrid analysis results in overall less skillful forecasts. Convection and precipitation are overforecast in most forecast hours when using planetary boundary layer pseudo-observations, but the root mean square error and bias of the 2 h forecast of 2 m dew point temperature are reduced by 1.6 K during the afternoon hours. Lighter hourly accumulated precipitation is predicted better when using 100 % ensemble BEC in the first 4 h forecast, but heavier hourly accumulated precipitation is better predicted with 75 % ensemble BEC. Our results provide insight into current capabilities of the RRFS data assimilation system and identify configurations that should be considered as candidates for the first version of RRFS.

1 Introduction

The increase in computational resources over the last several decades has allowed a considerable increase in horizontal resolution in numerical weather prediction (NWP) (e.g., Bauer et al., 2015; Yano et al., 2018). Currently, many NWP centers have



20 developed and use high resolution models operationally for short range weather forecast guidance (e.g., Bannister et al., 2020). These models have provided more realistic forecasts of hazardous weather events where deep convection is explicitly resolved (e.g., Lean et al., 2008). Typically, in models with grid spacing less than 4 km, the deep cumulus parameterization is turned off and convection is treated explicitly, though not necessary completely resolved. Such configurations are therefore often called convection-allowing models (e.g., Schwartz and Sobash, 2019).

25 The current suite of operational convection-allowing models at the National Centers for Environmental Prediction (NCEP) consists of multiple dynamical cores and physics schemes, none of which have many shared components with their global counterpart, the Global Forecast System (GFS). At present, convection-allowing forecasts are produced by the North American Mesoscale Forecast System (NAM) 3 km nests, High Resolution Rapid Refresh (HRRR), and the High Resolution Window (HIRESW) systems. These systems are then combined into a convection-allowing ensemble known as the High Resolution Ensemble Forecast system (HREF; Roberts et al., 2020). The global modeling suite is based on the Finite-Volume Cubed-Sphere (FV3) dynamical core with a physics suite developed and tuned for global applications, while the regional operational models are based on unique physics suites and dynamical cores, such as the Advanced Research Weather Research and Forecasting model (WRF-ARW; Skamarock et al. (2008)) and Non-hydrostatic Multiscale Model on the B-grid (Janjić et al., 2001).

30 Considerable human and computing resources and efforts are required to maintain and improve such a variety of models in order to continuously provide successful numerical guidance for different sectors of society (Link et al., 2017). Therefore, the National Oceanic and Atmospheric Administration (NOAA) is currently transitioning toward the Unified Forecast System (UFS; <https://ufscommunity.org/>) (EMC, 2018). A unified forecasting system brings together advanced developments in weather and climate models, maximizing collective efforts and resources, while also connecting expertise across the scientific community (e.g., Hazeleger et al., 2010; National Research Council, 2012; Brown et al., 2012). Within the UFS framework, 40 the GFS was coupled with the Wavewatch III wave model in the operational upgrade of March 2021, improving the low-level cold bias seen in the previous GFS version during the cool season (NWS, 2021). The UFS application for convection-allowing forecasts is the Rapid Refresh Forecast System (RRFS) (Alexander and Carley, 2020). RRFS is under development and aims to facilitate the unification of the regional convection-allowing suite of models by subsuming the present suite of multi-dynamic core modeling applications in the next operational upgrade (UFS-R2O, 2020).

45 The FV3 dynamical core developed at the Geophysical Fluid Dynamics Laboratory (GFDL) (Lin, 2004; Putman and Lin, 2007; Harris and Lin, 2013) was selected for UFS applications after a thorough evaluation process (Ji and Toepfer, 2016). In the past several years, multiple studies have been conducted using the FV3 dynamical core for convective scale NWP where it has demonstrated skill (e.g., Potvin et al., 2019; Zhang et al., 2019; Snook et al., 2019; Zhou et al., 2019; Harris et al., 2019, 2020b; Gallo et al., 2021; Black et al., 2021). For example, the grid stretching capability of a FV3-based global model 50 (Harris and Lin, 2013) was evaluated in Zhou et al. (2019). Small scale structures of the convective activity in a squall line case were correctly resolved, although an overprediction of the precipitation and radar reflectivity values was observed. In the framework of the 2018 NOAA Hazardous Weather Testbed Spring Forecasting Experiment, Gallo et al. (2021) discussed the strengths as well as elements that need improvement in FV3-based convection-allowing models when compared to HRRR, highlighting the overproduction of high reflectivity values (45 dBZ) in the storms. A limited area model capability based on



55 the FV3 dynamical core (FV3 LAM) has also been developed, which reduces required computational resources associated with having to run a global model to accommodate a nest. Month long tests at convection-allowing resolution with FV3 LAM show comparable performance relative to a two-way nested domain at forecast lead less than 24 hours (Black et al., 2021). Additionally, developments on the UFS hurricane application using the FV3 LAM, the Hurricane Analysis and Forecast System (HAFS), have shown improvements of track and intensity forecasts compared to GFS (Dong et al., 2020).

60 RRFS is presently being built upon the UFS Short Range Weather Application (SRW) (Alexander and Carley, 2020). The first version (v1.0.0) of the SRW (UFS Development Team, 2021) was released on March 2021 and it includes the FV3 LAM with pre-processing utilities, the Common Community Physics Package (CCPP), the Unified Post Processing System (UPP), and a workflow to run the system on a variety of high performance computing platforms as well one's own personal laptop (Wolff and Beck, 2020). Harrold et al. (2021) investigated how the SRW represents the convective gray zone for varied model
65 grid spacing in two physics suites: GFS version 16 and the RRFS (RRFSv1a). It was found that for both physics suites a 3 km resolution yields a more realistic representation of convection but with a cool 2 m temperature bias and an underforecast of lower reflectivity values. Kalina et al. (2021) also examined these two SRW physics suites and demonstrated that they failed to depict trailing stratiform precipitation in simulations of a squall line and Hurricane Barry (July 2019). Preliminary results indicate that this issue could be related to a smaller amount of ice crystals in the model runs than in the radar-derived
70 data. Moreover, the same experimental configuration was used by Newman et al. (2021) to investigate the land-atmosphere interactions using a heatwave case and a winter cold air outbreak case. A cooler planetary boundary layer (PBL) with increased cloudiness and less surface downward shortwave were found in the heatwave case simulations, while an increase is seen in the 10 m wind speed in the cold air outbreak case.

NWP is an initial value problem and convection-allowing forecasts are no different. Forecasts at such scales strongly depend
75 on the quality of the initial conditions and the ability of the analysis algorithm to provide accurate state estimates of fine-scale spatiotemporal structures that are of inherent interest in convection-allowing NWP, such as ongoing convection, complex circulations associated with subtle boundaries (e.g. dry lines), etc. To achieve such analyses with reasonable fidelity, dense and accurate observations are needed in the data assimilation window. However, implementing observation operators for the most dense observation types is often complex, such as radar reflectivity, as they are often indirectly related to state variables. In
80 addition, nonlinear model processes along with non-Gaussian error characteristics are commonplace at the convective-scale, both of which encumber the accurate specification of error covariance matrices and, to varying degrees, violate some of the underlying parametric assumptions that are at the foundation of most state-of-the-art analysis algorithms (e.g., Poterjoy et al., 2017; Gustafsson et al., 2018; Yano et al., 2018; Bannister et al., 2020). Nevertheless, many studies have shown the benefits of using data assimilation in improving convection-allowing forecasts (e.g., Dixon et al., 2009; Brousseau et al., 2012; Tong
85 et al., 2016; Shen et al., 2017; Tong et al., 2020; Gao et al., 2021). Dixon et al. (2009) used the three-dimensional variational algorithm (3DVar) and nudging methods to assimilate moisture and precipitation observations, showing a great performance of convective precipitation forecasts in the first 7 hours. Shen et al. (2017) explored the benefits of using a flow-dependent ensemble covariance from the hybrid ensemble transform Kalman filter (ETKF) based ensemble 3DVar (3DEnVar) and found that hybrid analyses lead to more skillful 12 h precipitation forecasts compared to pure 3DVar.



90 The SRW v1.0.0 does not include a data assimilation capability and thus initial conditions in recent studies are purely from external models. Since SRW will underpin the RRFS, NOAA's next generation rapidly-updated, convection-allowing ensemble forecast system, it is imperative that the data assimilation component behave as good or better than the current operational state-of-the-art, which is the HRRR version 4. However, the first and, to our knowledge, only high resolution convection-allowing data assimilation study using the FV3 dynamical core is Tong et al. (2020), which studied the impact of the assimilation of radar radial velocity and reflectivity using different data assimilation algorithms with the Gridpoint Statistical Interpolation (GSI; e.g., Wu et al., 2002; Kleist et al., 2009). Although results were for a single case study, positive impacts of assimilating radar data were found in all analyses and forecasts. Using hybrid 3DVar with 75 % of the ensemble background error covariance (BEC) showed storm structures in the 2 h forecast comparable to when using ensemble Kalman (EnKF), although EnKF outperformed 3DVar in the first hour forecast. Both methods showed higher equitable threat scores (ETS) when compared to 3DVar and pure ensemble during the 4 h forecast analyzed.

Accordingly, this study seeks to describe the initial data assimilation infrastructure and performance of a prototype RRFS system, RRFS v0.1. The focus is on extensive testing within the context of a case study to establish an understanding of baseline sensitivities, and an evaluation of various configurations and algorithms available in GSI is performed in order to investigate the impact of using data assimilation on forecasts of convective storms. The three-dimensional (3D) variational (3DVar) and hybrid 3DVar data assimilation algorithms, supersaturation removal, PBL pseudo-observations, and various weights of the ensemble BEC in the hybrid EnVar analyses are assessed. A cycling strategy is configured and its effect on the cycled analyses is evaluated. A case study that focuses on a severe convective weather event is used to demonstrate sensitivities. The RRFSv1a physics suite was adopted for the numerical simulations. Experiment results were verified using the Model Evaluation Tools (MET), which is the unified verification package that will be used by UFS applications (Brown et al., 2021). Results obtained provide developers an insight on the capabilities of RRFS developments in predicting convection as well as suggestions for the RRFS data assimilation system framework.

A brief description of each RRFS component and corresponding workflow is presented in Sect. 2. In Sect. 3, the case study, domain, data, and experiment configurations are described. Results are presented in Sect. 4 and the summary and final remarks in Sect. 5.

115 2 Rapid Refresh Forecast System (RRFS) components

In this section, the atmospheric model, physics, data assimilation, pre-processing, and post-processing components of the RRFS v0.1 are briefly described. The workflow used to streamline all components of the system and the cycling configuration are also presented.

2.1 Atmospheric Model

120 The FV3 dynamical core was implemented in GFS replacing the spectral dynamical core for an operational upgrade in June 2019. The FV3 is a fully compressible, non-hydrostatic core featuring a Lagrangian vertical coordinate and cubed sphere grid



(Lin and Rood, 1996, 1997; Lin, 1997, 2004; Putman and Lin, 2007; Harris et al., 2020a). The Lagrangian vertical coordinate allows for a unique, straightforward representation of vertical motions directly through the relative deformation of the vertical layers. This is in contrast to the Eulerian framework presently featured in operational non-hydrostatic dynamical cores in use
125 at the convective-scale (Skamarock et al., 2008; Janjić et al., 2001).

The FV3, originally a global model, features three types of local refinement capabilities: stretching of the global grid (Harris et al., 2016), nesting within the global grid (Harris and Lin, 2013), and a LAM capability (Black et al., 2021). In this study the focus is on the LAM capability, as it underpins the future RRFS and requires fewer computing resources to achieve similar forecast performance as compared to a two-way nesting method at lead times less than 24 hours (Black et al., 2021). For the
130 FV3 LAM, an external model must provide lateral boundary conditions (LBCs). Initial conditions (ICs) must also be provided at least once to initiate the forecast sequence for subsequent data assimilation cycling. A more complete description of the FV3 LAM and additional justification for limited area modeling in the context of operational, convection-allowing numerical weather prediction can be found in Black et al. (2021).

2.2 Pre-processing

135 The pre-processing is done by the utilities (UFS_UTILS) developed by NCEP's Environmental Modeling Center (EMC) (https://github.com/NOAA-EMC/UFS_UTILS) and other collaborators. UFS_UTILS can be used to generate the model grid, orography, and surface climatology (e.g. maximum snow albedo, soil, vegetation type, vegetation greenness, etc.). UFS_UTILS can also read from external models and prepare ICs and LBCs for a FV3 LAM model run.

2.3 Physics

140 The CCPP (<https://dtcenter.org/community-code/common-community-physics-package-ccpp>) is a collaborative effort between scientists at NOAA and the National Center for Atmospheric Research (NCAR). The goal is to assemble parameterizations developed by different groups into a common framework to be used interchangeably for numerical prediction at any scale (Heinzeller et al., 2019). Hence, the CCPP contains a set of physical schemes and a common framework that facilitates the interaction between the physics and a numerical model (Bernardet et al., 2020). The current common framework was devel-
145 oped by the Developmental Testbed Center (DTC). A number of physics suites are available allowing great flexibility for a wide range of users. A single-column model (CCPP SCM) option has also been developed, which is available in the latest CCPP release (version 5.0, CCPPv5) (https://dtcenter.ucar.edu/GMTB/v5.0.0/sci_doc/index.html). The CCPPv5 supports the RRFSv1a and GFS version 16 physics suites for the SRW.

The RRFSv1a physics suite from CCPPv5 is used in all simulations in this study. It is based on physical schemes imple-
150 mented in the operational RAP and HRRR systems. This suite is composed by a subgrid-scale cloud pre-radiation interstitial following Xu and Randall (1996), the Mellor-Yamada-Nakanishi-Niino (Nakanishi and Niino, 2009)–eddy diffusivity-mass flux (MYNN-EDMF) (Olson et al., 2019) boundary layer and shallow cloud scheme, the unified gravity wave physics scheme version 0 (Alpert et al., 2019), the Thompson Aerosol-Aware microphysics scheme (Thompson and Eidhammer, 2014), the Rapid Radiative Transfer Model for Global Circulation Models (RRTMG) for longwave and shortwave radiation processes



155 (Mlawer et al., 1997; Iacono et al., 2008), the surface layer scheme of Long (1986), the near-surface sea temperature scheme of Li et al. (2015), the NoahMP (Noah Multi-Physics) land surface model (Niu et al., 2011), and the Navy Research Laboratory ozone photochemistry (2015) and stratospheric water vapor schemes (McCormack et al., 2008).

2.4 Data Assimilation

GSI is a variational data assimilation system featuring 3DVar (e.g., Wu et al., 2002; Kleist et al., 2009), hybrid 3DVar (e.g., Wang, 2010; Wang et al., 2013; Wu et al., 2017), and hybrid 4DVar methods (e.g., Wang and Lei, 2014; Kleist and Ide, 2015a). It also includes an optional non-variational, complex cloud analysis capability that executes after the variational analysis as a method to specify cloud and hydrometeor variables (e.g., Hu et al., 2006a, b; Benjamin et al., 2021). GSI features the following standard control (analysis) variables: streamfunction, velocity potential, temperature, surface pressure, and normalized relative humidity following Holm et al. (2002). However the choice of control variable is flexible and one may extend or modify the standard set to include other fields, such as hydrometeors or radar reflectivity (e.g., Wang and Wang, 2017). In 3DVar and the associated hybrid variants, the static background error covariance is approximated through the application of a recursive filter which models the autocorrelations (Purser et al., 2003) while cross-covariances are handled in the standard context through statistical balance relationships obtained via regression (e.g., Wu et al., 2002; Parrish and Derber, 1992). The analysis is obtained by minimizing the incremental form cost function through the preconditioned conjugate gradient method (Derber and Rosati, 1989; Bathmann, 2021).

The extension of GSI from traditional 3DVar to hybrid 3DVar and to hybrid 4DVar is accomplished through the extended control variable approach (e.g., Lorenc, 2003; Wang, 2010; Kleist and Ide, 2015b, c). In this configuration, one is able to incorporate flow-dependent covariance information obtained from a complementary suite of ensemble forecasts. Typically this ensemble is obtained from a companion ensemble-based data assimilation system, such as the EnKF. However one may use any suitably available ensemble. In fact, the regional operational data assimilation systems at NCEP have used the ensemble members from the GFS Data Assimilation System directly in the hybrid 3DVar framework with considerable benefit to the resulting forecast (Wu et al., 2017). This study focuses on the 3DVar and hybrid 3DVar frameworks and uses the global ensembles as described in (Wu et al., 2017).

GSI is capable of assimilating a large suite of observations. This includes, but is not limited to, satellite radiances (e.g., Zhu et al., 2014), derived Global Navigation Satellite System Radio Occultation (GNSS-RO) observations, radar radial velocity and reflectivity (e.g. Lippi et al., 2019; Chen et al., 2021), Geostationary Lightning Mapper (GLM) lightning flash rates, web-camera derived estimates of horizontal visibility (Carley et al., 2021), and conventional observations (Hu et al., 2018). After 2014 it became a community system, maintained and supported by the EMC and the DTC (Shao et al., 2016). Recently, it has been added as the analysis component to improve initial conditions for the RRFS (Hu et al., 2021).

185 Presently, GSI is the data assimilation system used at NCEP for all operational atmospheric data assimilation applications (e.g., Wu et al., 2002; Kleist and Ide, 2015a; Hu et al., 2017). It was initially developed by the EMC (Wu et al., 2002) and implemented as the analysis component in the operational GFS in May 2007 (Kleist et al., 2009) and in the operational Rapid Refresh (RAP) in May 2012 (Benjamin et al., 2016).



2.5 Post-processing

190 UPP is used at NCEP in all operational models. A community version is currently supported and maintained by the DTC. UPP takes native output from the model grid points/cells and creates post-processed outputs including numerous diagnostic quantities in the same model output grid and model-native or isobaric vertical coordinate (UPP, 2021). Post-processed outputs include diagnostics fields that are not part of the model computation that have been developed for different applications. These include, for example, precipitation type, composite reflectivity, simulated satellite brightness temperatures, updraft helicity, storm motion, ceiling or cloud-base height, vertically integrated liquid, and lightning, among several others. More details on the diagnostic fields developed for hourly updated NOAA weather models such as RAP and HRRR, and how they are calculated, can be found in Benjamin et al. (2020). These products are critical for users in their forecast processes. UPP was selected as the unified post-processing system for UFS and modifications have been made to work with FV3-based models. Currently, it can be used in the UFS medium range weather and SRW applications.

200 2.6 Workflow

The workflow ties all RRFS components together and handles all system interdependencies. In essence, it manages the cycling configuration taking into account each task dependency and specification. It oversees that tasks to generate ICs and LBCs only start if all needed information was obtained from the previous step. It manages how the data assimilation cycle advances, i.e. by running the forecast to generate the first guess and running the analysis once the first guess is completed. It handles the model execution by supervising availability of ICs and LBCs for the specific hour, and controls that model outputs only be postprocessed if they exist in the model run directory. It also manages crucial information on computational resource requirements to run each task.

A schematic diagram of major tasks and the general pipeline of the RRFS system is provided in Fig. 1. The task “Make Fixed Files” generates the model grid, orography, and climatological information needed for the model execution. The tasks “Make ICs” and “Make BCs” read data from external models (such as GFS and HRRR), perform the necessary calculation, interpolation, conversion, and then generate appropriate ICs and LBCs for a FV3 LAM model run. The task “Run analysis” (the gray shaded area in Fig. 1) is to execute the data assimilation system for a FV3 LAM run. It ingests various types of observations and combines them with a first guess (or background) to generate a best possible atmospheric analysis for the initialization of the FV3 LAM model integration. The first guess can be either an IC from an external model (after the task “Make ICs”) or a short term forecast (1 – 6 h forecast, configurable to users) from a previous FV3 LAM model run. The first scenario is referred to as a “cold start” (the blue box in Fig. 1) while the latter is called a “warm start” (the red box in Fig. 1). In practice, for a FV3 LAM “warm start,” the first guess comes from “restart” forecast files generated by the FV3 LAM model. The task “Run model” is to run the FV3 LAM model with ICs and LBCs prepared from the previous steps. It is worth mentioning that besides the “cold start” and “warm start,” a FV3 LAM model run can also start from an IC made directly from an external model without the data assimilation step. This is also referred as a “cold start.” The task “Run post” is to post-process the FV3 LAM forecasts and generate all target model fields for downstream plotting and/or examination.

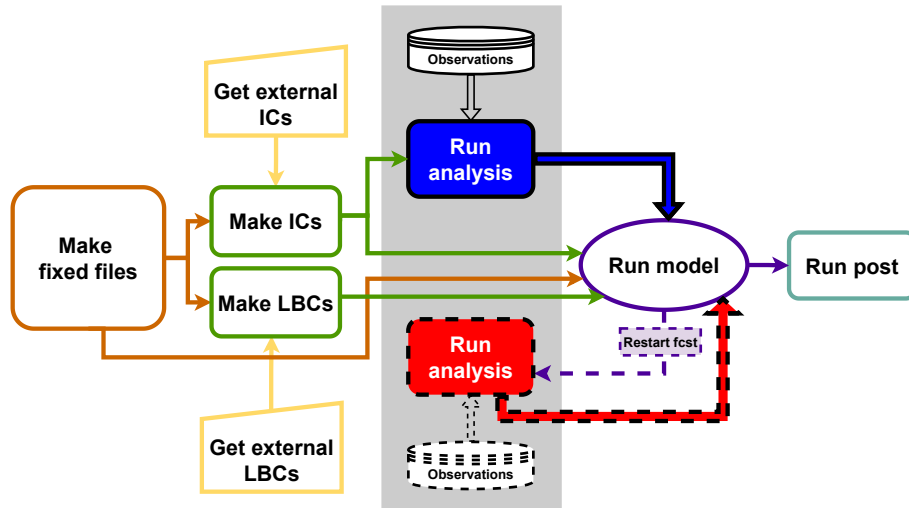


Figure 1. Schematic diagram of the RRFs tasks and workflow.

2.7 Cycling configuration

The cycling configuration of the RRFs v0.1 is similar to the one used in RAP, i.e. cold starts are performed every 12 hours and warm starts are performed at all other cycles using the 1 h forecast from the previous cycle as background for the analysis.

225 RAP performs hourly-updated continuous cycles with cold starts at 09:00 UTC and 21:00 UTC using the 1 h forecast from cycles initialized at 08:00 UTC and 20:00 UTC in 6 h parallel hourly spin-up cycles. The parallel spin-up cycles are cold started from GFS atmosphere analyses and RAP surface fields at 03:00 UTC and 15:00 UTC. Cold starts in RAP introduce the atmospheric conditions while RAP land surface fields are fully cycled in the continuous cycle (Benjamin et al., 2016; Hu et al., 2017). At the time of execution of this research not many RAP functionalities were available for use in the RRFs data

230 assimilation framework, therefore a more simplified configuration with partial cycling is used. Figure 2 illustrates the RRFs cycling configuration from cycles initialized between 00:00 UTC through 06:00 UTC. In each cycle, an 18 h free forecast is launched following the analysis, with hourly outputs. A cold start is performed at 00:00 UTC and warm starts between 01:00 UTC to 06:00 UTC using the FV3 LAM 1 h forecast from the previous cycle as background for the analysis.

3 Methods

235 In order to achieve skillful forecasts comparable to the current operational convection-allowing suite, each component of the RRFs needs to be exhaustively tested to determine the best configuration. This study focuses on the initial configuration of the data assimilation framework. In this section, the case study, general setup of the experiments, description of the experiments conducted, and verification methodology are presented.

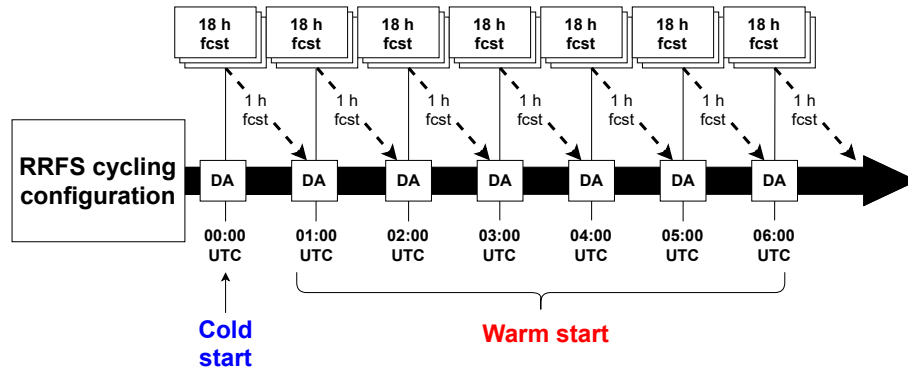


Figure 2. RRFS cycling configuration diagram.

3.1 Case overview

240 A line of convective storms developed over northeastern Oklahoma ahead of a southward moving cold front during the afternoon of 4 May 2020. At 18:00 UTC on 4 May 2020, a surface low pressure was observed across western Oklahoma with a dry line extended over western Texas, favoring an environment with low-level convergence, high temperatures, and humidity over these areas. Between 19:00 UTC and 20:00 UTC, high values of mixed layer convective available potential energy (MLCAPE) (3694 J kg^{-1}) and effective bulk shear (48 kt for the surface to 3 km layers and 36 kt for the surface to 6 km shear) were
245 observed over northeastern Oklahoma. This environment provided favorable conditions for severe convective storms with potential for strong updrafts and development of supercells (e.g., Weisman and Klemp, 1982; McCaul and Weisman, 2001). At 20:00 UTC, the convective cells were first seen in the radar reflectivity observations over that region (Fig. 3a), and at around 22:00 UTC (Fig. 3c) a line of storms extended across central Oklahoma along the pre-frontal wind shift. The system evolved while slowly moving southeastward. A supercell developed over far southwestern Missouri at 00:00 UTC on 5 May (Fig. 3e),
250 producing hail of 1.25 inches and 1.5 inches in diameter according to hail reports from the Storm Prediction Center (SPC). Clusters of severe storms developed across south-central Oklahoma along the intersection of the cold front with the dry line. The convection associated with the squall line evolution resulted in several instances of large hail and high wind, mostly over northeastern and south-central Oklahoma, southeastern Kansas, southwestern Missouri, and northwestern Arkansas.

3.2 Setup of experiments

255 For the simulation of this case, a domain is configured consisting of 460×460 grid cells centered on Fort Smith, Arkansas with a 3 km horizontal grid-spacing and 64 vertical layers. All simulations start at 00:00 UTC on 4 May 2020 and run hourly cycles until 06:00 UTC on 5 May 2020. Hourly 3 km HRRR analyses and forecasts are used to generate the ICs and LBCs for the FV3 LAM. The observation data assimilated in each experiment are the same as those used in the operational RAP system (Hu et al., 2017) and includes upper air observations from rawinsondes, dropsondes, pilot balloons, aircrafts, and wind profilers;
260 surface data from synoptic stations, METeorological Aerodrome Reports (METAR), and the Mesoscale Network (MESONET);

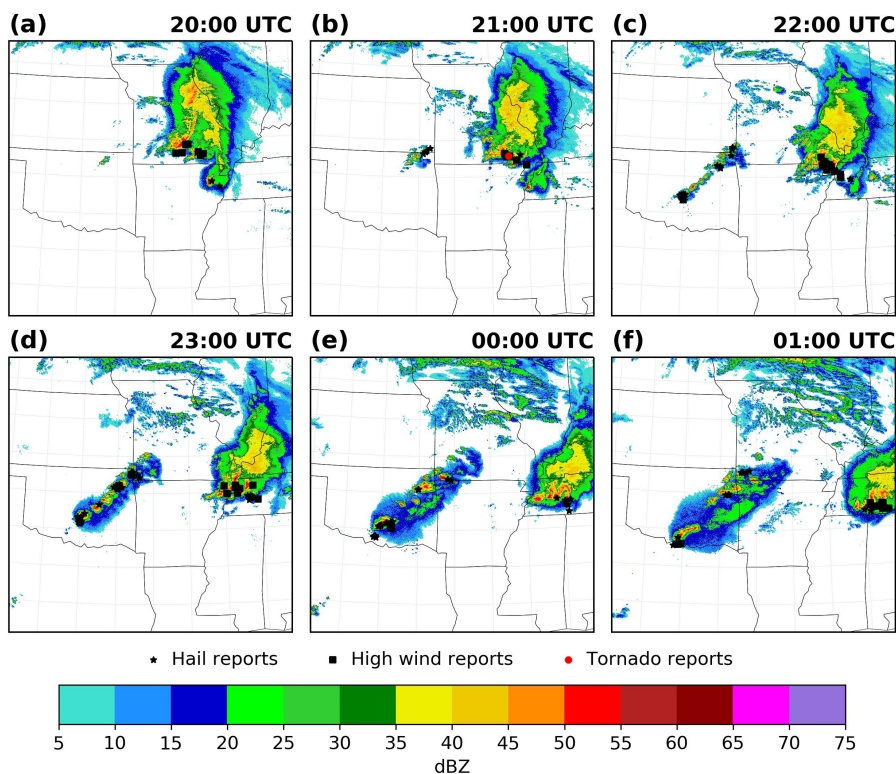


Figure 3. Hourly Multi-Radar Multi-Sensor (MRMS) composite reflectivity and hourly hail (black stars), high wind (black squares), and tornado (red circles) reports from the SPC, from 20:00 UTC on 4 May 2020 through 01:00 UTC on 5 May 2020.

radar radial velocity and the vertical azimuth display derived from radar radial velocity; Atmospheric Motion Vectors (AMV) wind derived from satellite observations; and the Global Positioning System (GPS) Integrated Precipitable Water (GPS-IPW). The time window used is 1 hour, allowing for observations within 30 minutes before to 30 minutes after the analysis time to be assimilated.

265 Experiments are conducted testing the GSI 3DVar and 3DEnVar systems. For the hybrid 3DEnVar analysis, the Global Data
Assimilation System (GDAS) 80 member ensemble forecasts (9 h forecasts) are used to provide the ensemble BEC (e.g. Wu
et al., 2017). These forecasts are available four times per day, therefore the same 9 h GDAS ensemble forecasts are used for the
2 hours before and 3 hours after its valid hour. For example, the 9 h GDAS ensemble forecasts initialized at 00:00 UTC (valid
at 09:00 UTC) are used for the cycles from 07:00 UTC to 12:00 UTC. Similarly, the 9 h forecast GDAS ensemble initialized
270 at 06:00 UTC (valid at 15:00 UTC) is used for the cycles from 13:00 UTC to 18:00 UTC. This follows the same strategy in the
RAP system (Hu et al., 2017). In all experiments with data assimilation, two outer loops with 50 inner loops each are performed
to minimize the cost function and find each analysis. The spatial resolution of the analysis is 3 km, as in the forecast model.



3.3 Sensitivity experiments

275 GSI provides many functionalities and parameters, enabling users to make the best data assimilation configurations for different practices. A series of experiments were designed to examine the impact of different configurations on the analyses and forecasts. Some RAP configurations were tested in the experiments following Hu et al. (2017). An experiment with no data assimilation is provided, acting as the baseline for all other experiments. This baseline experiment is called NoDA and uses the same cycling configuration as experiments with data assimilation but without the execution of GSI. Table 1 lists all experiments in this research.

280 In order to examine how different weights of the ensemble BEC affect the results and what would be the best choice for the RRFS analysis, experiments with different ensemble weights were conducted. Only results from three experiments are presented here, i.e. 3DVar, 100EnBEC, 75EnBEC. The experiment with 3DVar does not include the ensemble BEC part, 100EnBEC uses pure ensemble BEC and does not include the static part, and 75EnBEC uses a combination of 75 % ensemble and 25 % static BEC.

285 Ensemble localization length scales play an important role in ensemble-based data assimilation algorithms, such as hybrid EnVar analyses (e.g Campbell et al., 2010), as an effective way to mitigate sampling errors due to the relatively small ensemble size available for hybrid EnVar and ensemble analyses (Houtekamer and Mitchell, 2001; Hamill et al., 2001), especially at convective scales (e.g Gustafsson et al., 2018). At this stage, it is important to determine how large the localization radius needs to be for RRFS analyses. Therefore, experiment VLOC was designed to examine the vertical localization radius that yields more realistic forecasts in RRFS. The localization function in GSI is implemented as a single application of an isotropic recursive filter (Purser et al., 2003) and the radius is specified as a Gaussian half-width, either in scale height ($\ln p$) or in terms of number of vertical layers. In this study, the radius is specified in terms of layers. In VLOC, the vertical ensemble localization radius is changed from 3 vertical layers for the whole atmosphere (used in all other experiments) to a height-dependent localization setting: 1 vertical layer in the lowest 10 model layers and 3 layers for other model layers. A comparison experiment (not shown) was conducted reducing the vertical localization to 2 layers in the first 10 model layers, but results showed neutral impacts over VLOC.

295 The operational RAP system has developed a PBL pseudo-observation function in order to obtain a better representation of the PBL in the analysis. This function was initially developed to further leverage the information provided by METAR observations, extending their representativeness through the PBL depth in the Rapid Update Cycle (RUC) analyses. Improvements in the temperature, dew point, and CAPE forecasts were found when spreading the innovations from temperature, moisture, and wind in the layers above surface and below the top of the PBL (Benjamin et al., 2004). Smith et al. (2007) also found a positive impact in the 3 h forecast of CAPE by using the PBL pseudo observations, and the impact was greatly increased when additionally assimilating GPS-IPW. Benjamin et al. (2010) found higher positive impact during the summer, when the PBL is deeper. This function has been used operationally since RAP version 3 (Benjamin et al., 2016), and therefore, it needs to be tested and tuned for its potential use in RRFS analyses. To test whether and how this function works for the RRFS v0.1, experiment PSEUDO is designed and results are presented in Sect. 4.3.



Table 1. List of experiments presented in this study.

Experiments	Background error covariance weights	Supersaturation removal	PBL pseudo-observations	Vertical ensemble localization scale
NoDA	No data assimilation			
3DVar	0 % ensemble 100 % static	false	false	3 layers
100EnBEC	100 % ensemble 0 % static	false	false	3 layers
75EnBEC	75 % ensemble 25 % static	false	false	3 layers
CLIPSAT	75 % ensemble 25 % static	true	false	3 layers
PSEUDO	75 % ensemble 25 % static	false	true	3 layers
VLOC	75 % ensemble 25 % static	false	false	1 layer in first 10 layers and 3 layers above

The study of Tong et al. (2020) showed that regardless of the method used, the storm coverage was overestimated and reflectivity values were much higher than the observed, which is likely to be linked to the physics suite used. However, it is also well known that nonphysical solutions (nonrealistic updraft/downdraft, negative humidity, supersaturation, etc.) can arise as a result from the data assimilation procedure (e.g., Janjić et al., 2014; Tong et al., 2016). In this study, experiment CLIPSAT is conducted to analyze how the supersaturation removal procedure available in GSI affects the storm forecasts of RRFS. This function constitutes a simple adjustment in the background supersaturation during the cost function minimization. More details on this function are presented in Sect. 4.4.

Experiments VLOC, PSEUDO, and CLIPSAT are performed using the hybrid 3DVar algorithm with 75 % of the ensemble BEC and compared against 75EnBEC results. Considering the good results obtained for experiment 75EnBEC (see Sect. 4.2) and that RAP uses operationally 75 % of the ensemble BEC (Hu et al., 2017), this percentage was then used for these other experiments.

3.4 Forecast verification

MET version 9.0 (Jensen et al., 2020) is used for forecast verification. MET was developed at the DTC and has been widely used by the NWP community. Upper air and surface observations are used to verify the vertical profiles of temperature, specific humidity, and wind, as well as 2 m temperature, 2 m dew point, and 10 m wind forecasts, respectively. For upper



air observations, the verification time window is 1 hour and 30 minutes before to 1 hour and 30 minutes after, while for surface observations, it is 15 minutes before to 15 minutes after the central time. The root mean square error (RMSE) and bias are computed, displayed with 95 % confidence intervals that were derived using a bootstrap resampling technique of 1000
325 replications with replacement at each forecast lead hour in every cycle, and with bias-corrected percentiles. Upper air statistics are further analyzed at 00:00 UTC and 12:00 UTC valid times.

Precipitation forecasts are verified against the hourly Stage IV precipitation product (Lin and Mitchell, 2005) in terms of the ETS and frequency bias (FBIAS) for different thresholds, but only >0.01 inches h^{-1} (0.254 mm h^{-1}) for lighter precipitation and >0.25 inches h^{-1} (6.35 mm h^{-1}) for heavier precipitation are presented here. The grid-to-grid approach in MET is used.

330 4 Results and discussions

4.1 Examination of Analyses

Observation availability and coverage play an important role in the data assimilation process. Therefore, how many and what type of observations are available for this squall line case are examined. Figure 4 shows the spatial distribution of assimilated temperature observations at the 19:00 UTC cycle on 4 May 2020 for experiment 3DVar (other cycles and experiments have
335 similar distributions and are not shown here). The analysis residuals (OmA) are also depicted in Fig. 4 using red and blue color depth for positive and negative values, respectively. In this analysis, assimilated temperature observations include those from aircraft, surface marine synoptic stations, METAR, and MESONET observations. There are a total of 3307 observations, which are well distributed across the limited model domain. Among these observations, 1545 are from aircraft, which concentrate around a few major airports as the flight descends or ascends, and spread along flight paths during the cruising portion of the
340 flight. Moreover, a substantial amount of MESONET surface observations are also assimilated. There are far fewer METAR observations, but they are distributed evenly in the domain. A very limited number of surface marine synoptic stations are found near the coast on the Gulf of Mexico. The analysis residuals for temperature are generally small for aircraft and METAR observations, mostly less than $\pm 1^\circ$ K in magnitude, while some MESONET observations have large analysis residuals.

In order to check how results of the RRFS analysis behave at different cycles and whether it executes correctly, Fig. 5
345 presents time series of the RMS error and bias for the backgrounds (1 h forecasts) as well as the analyses, verified against temperature observations (including all surface and upper air data as mentioned in Sect. 3.2). Results presented are for experiments 75EnBEC (Fig. 5a) and 3DVar (Fig. 5b). Verification is conducted by utilizing the observation innovations (OmB) and the analysis residuals (OmA) generated by GSI for each assimilated observation. Based on these OmB and OmA data, the RMS error and bias for the background and analysis are computed. It can be seen from Fig. 5 that the analyses have smaller RMS
350 errors and biases compared to the background in both experiments. This means the analyses fit closer to the observations, which is expected from a correctly executed data assimilation procedure. There is a noticeable jump in the RMS error values of the OmB from 00:00 UTC (12:00 UTC) to 01:00 UTC (13:00 UTC) on 4 May 2020. This is because 00:00 UTC and 12:00 UTC are cold started from HRRR analyses. On the contrary, at 01:00 UTC (13:00 UTC) on 4 May, the background used is from the FV3 LAM 1 h forecast. Therefore, forecasts used to initialize cycles at 01:00 UTC and 13:00 UTC undergo a spin-up process.

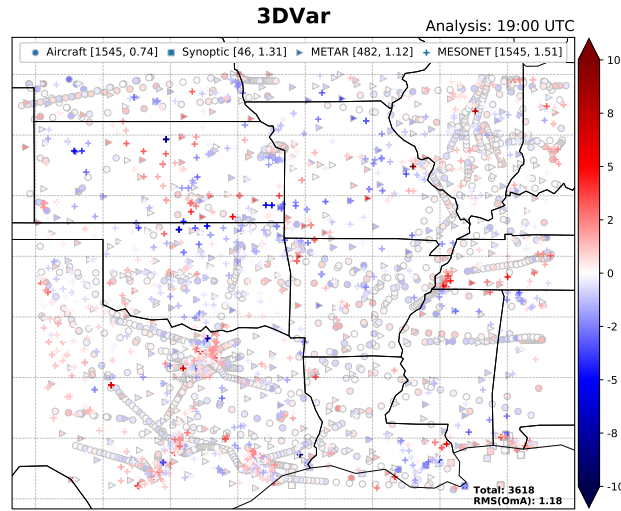


Figure 4. Spatial distribution of temperature observations and analysis residuals (OmA) for the analysis at 19:00 UTC on 4 May 2020 from experiment 3DVar. The color scale to the right indicates the magnitude of analysis residuals. The legend of observation type markers is shown at the top along with brackets listing associated counts and Root Mean Square (RMS) error for the OmA.

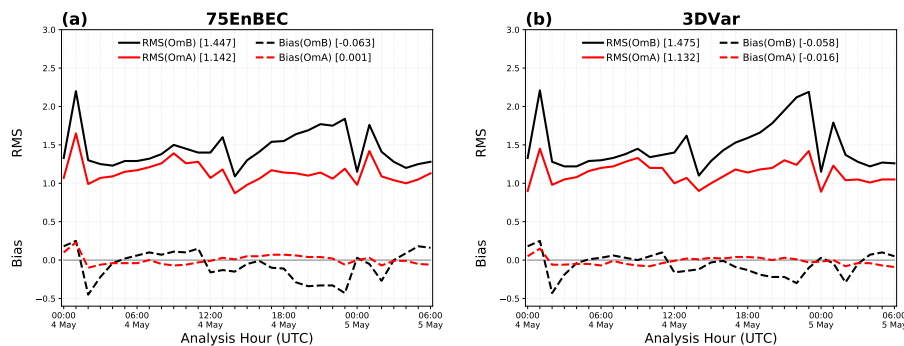


Figure 5. RMS, bias, and count of the temperature background (OmB) and analysis (OmA) against all observation types for analyses in all cycles performed for experiments (a) 75EnBEC and (b) 3DVar.

355 The FV3 LAM 1 h forecasts are still in this spin-up process and hence yield larger RMS errors. In Fig. 5a, the background
 RMS error increases steadily from 14:00 UTC to 23:00 UTC, compared to the relatively gentle increase between 02:00 UTC
 to 11:00 UTC on 4 May. This may be due to the fact that there is active convection during the afternoon hours and, hence, it is
 harder to obtain good forecast skill. Figure 5b has a much larger increase in the RMS error of OmB than that in Fig. 5a during
 the same time period, indicating that 75EnBEC performs better than 3DVar. Results from 100EnBEC are similar to 75EnBEC
 360 and not shown here.



4.2 The impact of hybrid ensemble weights and ensemble localization radius

4.2.1 The impact of hybrid ensemble weights

The hybrid EnVar data assimilation method is now widely used by NWP centers (e.g., Bannister, 2017; Gustafsson et al., 2018) and the research community. It combines the static and ensemble BEC, taking advantages from both the variational method and the EnKF filter method. It is robust, allows the use of flow-dependent BEC, avoids the development and maintenance of a tangent linear and adjoint model, and thus has gained mainstream practice. In this hourly updated RRFS system, the hybrid 3DVar method is tested. One of the major concerns is to how to obtain the optimal weight for the ensemble BEC in the hybrid 3DVar analysis. A series of weighting sensitivity experiments were conducted in order to find the best option for this study.

Figure 6 shows the specific humidity and temperature analysis increments for the 19:00 UTC cycle on 4 May 2020 for experiments 100EnBEC, 75EnBEC and 3DVar. The analysis conducted at 19:00 UTC is during a cycling period using warm starts and is close in time to the initiation of convection in the afternoon hours. Forecasts initialized by this analysis cover the squall line evolution from its initiation to decay stages. Therefore, this cycle was selected to show the analysis increments and storm forecasts in the following sections. The analysis increments from experiment 3DVAR (Fig. 6c and f) are smoother as compared to those from 75EnBEC (Fig. 6b and e), which exhibits some flow-dependent features. As it goes into pure ensemble BEC (Fig. 6c and d), more flow-dependent increments are obtained.

Figure 7 shows the 2, 4, and 6 h forecasts of composite reflectivity from the 19:00 UTC cycle on 4 May 2020, with 5 dBZ (solid lines) and 35 dBZ (dash lines) reflectivity observation contours overlaid for experiments 100EnBEC, 75EnBEC, 3DVar, and NoDA. The regridding tool in MET is used to interpolate the MRMS composite reflectivity observations to the same grid as the model forecasts. All experiments predict the general evolution of the squall line, from the initial stage to maturity, with overforecasting of high reflectivity values and underforecasting of spatial coverage. At the 2 h forecast, the experiments capture the convective initiation around northeastern Oklahoma, but the extent and intensity of the cells are overpredicted (Fig. 7a, d, g, and j). The initial cells are represented and located more accurately in the experiments with data assimilation, especially 75EnBEC (Fig. 7d). In the 4 h forecast, the squall line enters its mature stage and a line of storms are ranged from southwest Missouri to central Oklahoma (Fig. 7b, e, h, and k). Every experiment predicts a squall line, but there is substantial location and coverage error in the NoDA experiment. 3DVAR improves a little over NoDA. 75EnBEC does well to predict the squall line at the correct location, although the storm near the southwest tip of the observed squall line is still missing as in all other experiments (Fig. 7e). 100EnBEC overproduces the convection associated with the squall line, but still improves over 3DVar and NoDA at this forecast hour. In the 6 h forecast, the squall line moves eastward and covers from southern Missouri and northwestern Arkansas to southeastern Oklahoma. At this time, 3DVAR again performs better than NoDA, and 75EnBEC still makes the best forecast among all experiments (Fig. 7c, f, i, and l). Overall, data assimilation introduces evident, positive impacts to the storm forecasts in terms of the squall line location, orientation and coverage, though different assimilation strategies yield different impacts. The improvement from 3DVAR is somewhat limited while hybrid 3DVar is seen to perform much better. Among the experiments, 75% ensemble BEC gives the best forecasts.

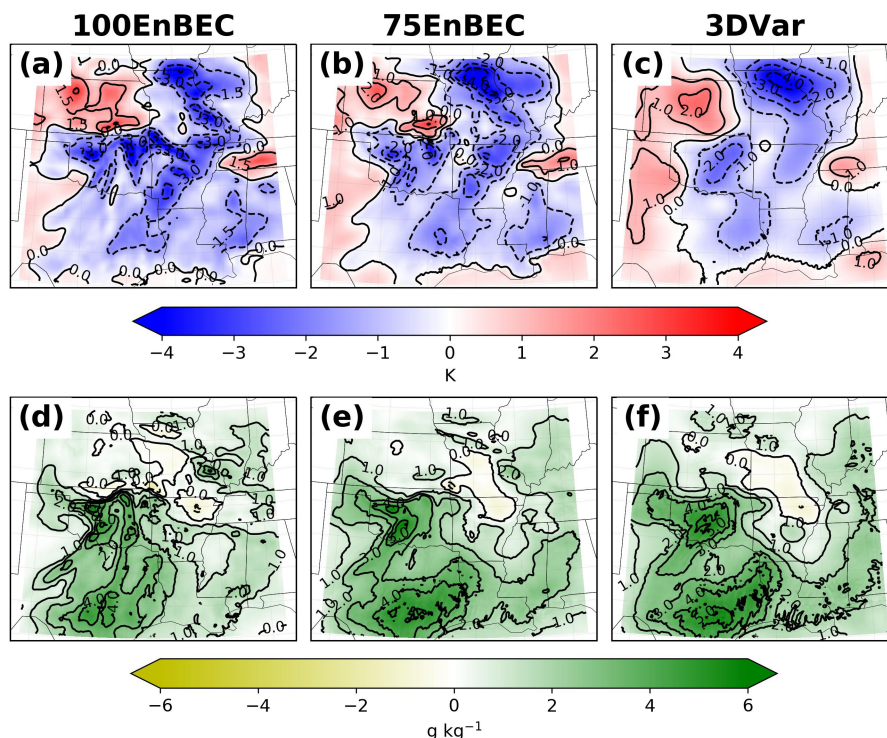


Figure 6. Analysis increment for temperature (K) (Temp) (a, b, and c) and specific humidity (g kg^{-1}) (Sphum) (d, e, and f) at the first level above the surface for 19:00 UTC on 4 May 2020, using 100 % ensemble BEC (a and d), 75 % ensemble BEC (b and e), and 3DVar (c and f).

395 Vertical profiles of RMSE and bias with 95 % confidence intervals for the 2 h forecast of temperature, specific humidity, and wind at 00:00 UTC and 12:00 UTC valid hours (from cycles initialized at 22:00 UTC and 10:00 UTC on 4 May, respectively) are shown in Fig. 8. Experiments show a consistent warm bias at both 00:00 UTC and 12:00 UTC in most vertical levels (Fig. 8a and d). A cold temperature bias is present in the layers between 850 and 650 hPa at 00:00 UTC and at 1000 hPa and 150 hPa at 12:00 UTC in all experiments. Experiment 75EnBEC has smaller temperature RMSE values between 400 and 250 hPa at 400 00:00 UTC and between 550 and 400 hPa at 12:00 UTC. Experiment 100EnBEC shows smaller RMSE at 850 hPa at both valid hours. All experiments with data assimilation have smaller temperature RMSE and bias below 850 hPa for 00:00 UTC, indicating the positive impact from data assimilation, but the impact of the analysis on the 2 h temperature forecast valid at 12:00 UTC is less clear. Similarly, the specific humidity forecasts show improved RMSE and bias from data assimilation below 900 hPa at 00:00 UTC and varied results among the experiments at 12:00 UTC (Fig. 8b and e). The 2 h forecast of 405 wind profiles has a positive bias in the lower levels at both valid hours, but mostly negative above 850 hPa (Fig. 8c and f). The wind RMSE results do not clearly indicate which experiment is best, but in general 100EnBEC shows the lowest values when considering all vertical levels.

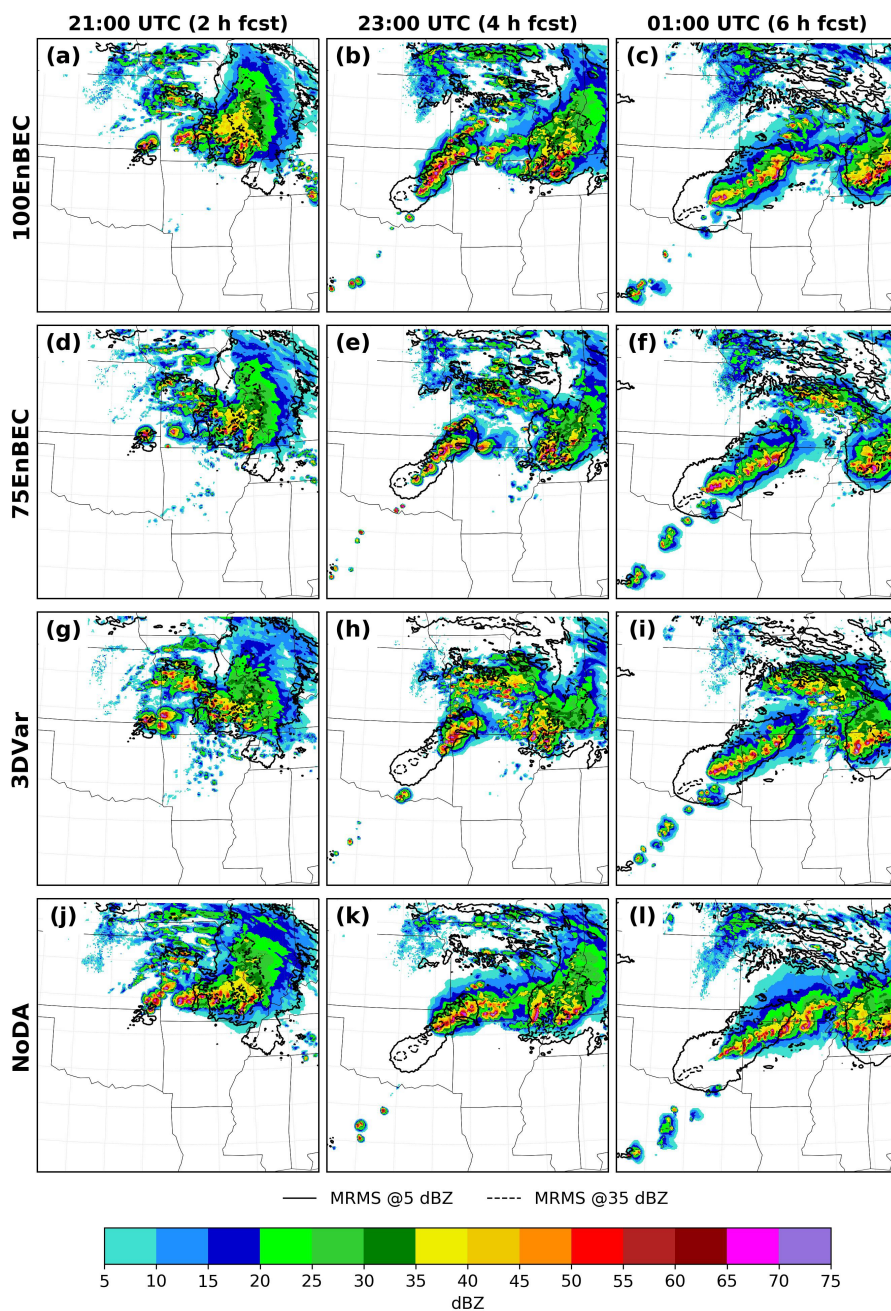


Figure 7.2. 4 and 6 h forecasts of composite reflectivity from experiments 100EnBEC (a, b, and c), 75EnBEC (d, e, and f), 3DVar (g, h, and i), and NoDA (j, k, and l), initialized at 19:00 UTC on 4 May 2020. Solid and dashed black lines are the 5 and 35 dBZ reflectivity observation contours, valid at the forecast time, respectively.

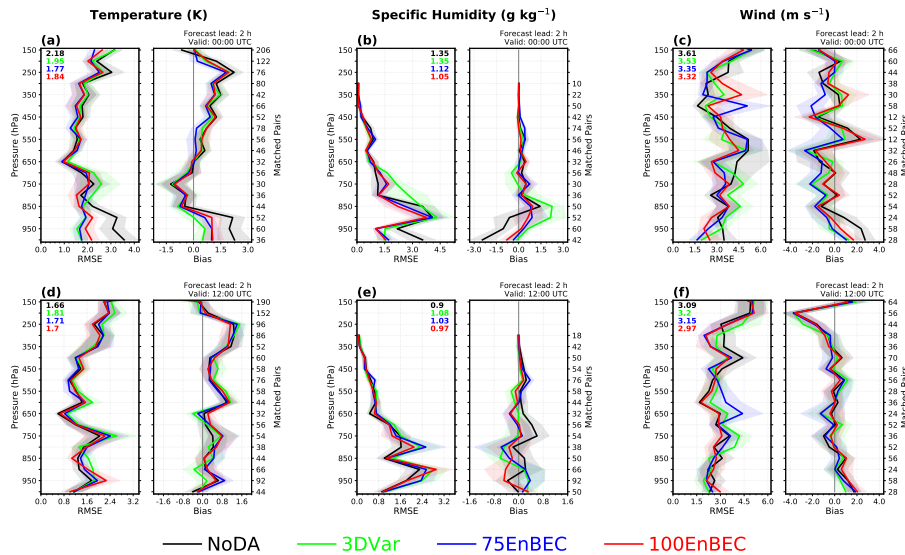


Figure 8. Vertical profiles of RMSE (left), bias (right), and upper (95 %) and lower (5 %) limits of the confidence interval (shading) for the 2 h forecast of temperature (a and d), specific humidity (b and e), and wind (c and f) against rawinsonde, dropsonde, and pilot balloon observations at 00:00 UTC (a, b, and c) and 12:00 UTC (d, e, and f) valid hours on 4 May 2020 for experiments 100EnBEC, 75EnBEC, 3DVar, and NoDA. Matched pair counts used for RMSE and bias computation at each level are shown on the right vertical axis. Each experiment’s mean RMSE and bias across all vertical levels are shown in the upper corner of each panel.

Figure 9 presents the RMSE and bias for the 2 h forecast of 2 m temperature (Fig. 9a and c) and 2 m dew point temperature (Fig. 9b and d) for experiments 100EnBEC, 75EnBEC, 3DVar and NoDA. 2 m temperature and 2 m dew point RMSE are evidently larger between cycles initialized at 16:00 UTC and 23:00 UTC in all experiments. This may be related to the initiation and development of convection in many areas of the domain. During this period, all data assimilation experiments have smaller 2 m temperature and 2 m dew point RMS errors compared to the NoDA experiment, demonstrating the positive impact from data assimilation. Further, experiments 75EnBEC and 3DVar perform better than 100EnBEC between cycles initialized at 16:00 UTC and 20:00 UTC (18:00 UTC and 22:00 UTC valid hour) (Fig. 9a). Among them, 75EnBEC produces the smallest 2 m temperature and 2 m dew point RMSE. From 16:00 UTC to 23:00 UTC valid hour, the 2 h forecasts from all experiments show a warm and dry bias. Data assimilation experiments helped to reduce this warm and dry bias to some extent.

To summarize, experiment 75EnBEC performs the reasonably better among all experiments discussed in this section. It gives the smallest 2 m temperature and 2 m dew point RMSE during the afternoon storm hours and a better representation of the storm in all forecasts lengths. Therefore, all subsequent experiments use the 75 % ensemble BEC.

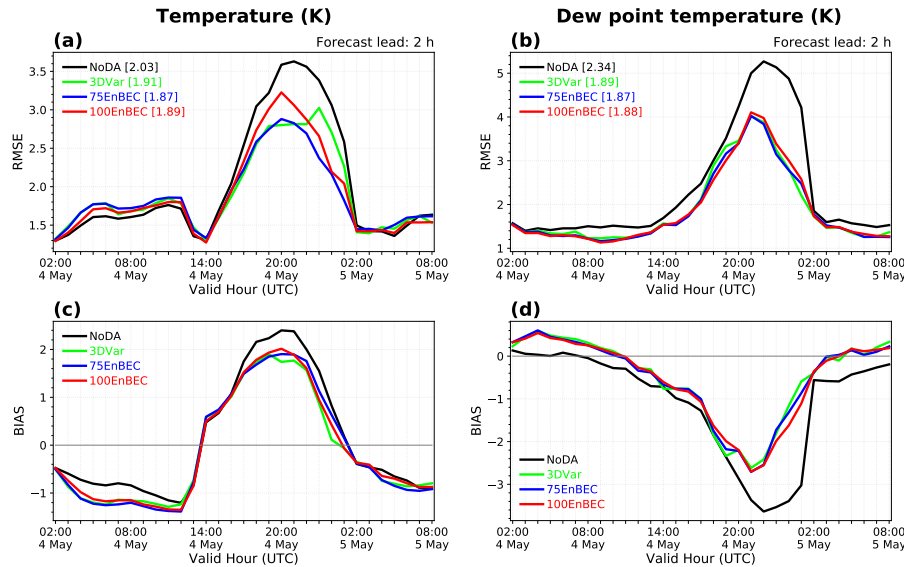


Figure 9. RMSE and bias for the 2 h forecast of 2 m temperature (a and c) and 2 m dew point temperature (b and d) against synoptic station and METAR observations for experiments 100EnBEC, 75EnBEC, 3DVar, and NoDA. Matched pair counts used for RMSE and bias computation at each cycle are shown on the right vertical axis. The legend for each experiment is shown at the bottom of each panel along with brackets listing the associated RMSE and bias averaged over all cycles.

420 4.2.2 The impact of vertical ensemble localization radius

Ensemble-based systems need a large number of ensemble forecasts in order to estimate a full rank covariance matrix. However, this is computationally impractical for operational and research activities. The ensemble-based covariances can be very noisy when using a small ensemble size which results in inaccurate analyses (e.g., Hamill et al., 2001; Gustafsson et al., 2018). The vertical and horizontal localization scales determine how the ensemble covariance varies with distance (Buehner, 2005).
 Gustafsson et al. (2018) pointed out that the localization needs to be large enough to not disrupt the large scale balance but small enough to represent fluctuations at the convective scale. Thus, unlike at global scales, the operational RAP and HRRR systems use a horizontal localization radius of 110 km in combination with a vertical localization radius of 3 layers, which give optimal forecast skill in RAP applications (Hu et al., 2017). In addition, Hu et al. (2017) tested a vertical localization radius of 9 layers, but using this larger localization radius degraded the forecast when compared to 3 layers. Knowing the expected results
 for a relatively larger vertical localization value using an 80 member ensemble, this study looked at the impact of reducing the vertical localization radius from 3 grid points to 1 in the lowest 10 vertical model levels (experiment VLOC). This reduction is adopted to capture finer vertical features of low atmosphere from the observations close to the surface and below the PBL.

Figure 10 presents the RMSE and bias vertical profiles of the 2 h forecast of temperature, specific humidity, and wind valid at 00:00 UTC and 12:00 UTC for experiments VLOC and 75EnBEC. For the temperature forecasts, VLOC has a lower RMSE
 between 800 and 550 hPa and smaller bias in the lower atmosphere between 1000 to 900 hPa and 800 to 700 hPa during

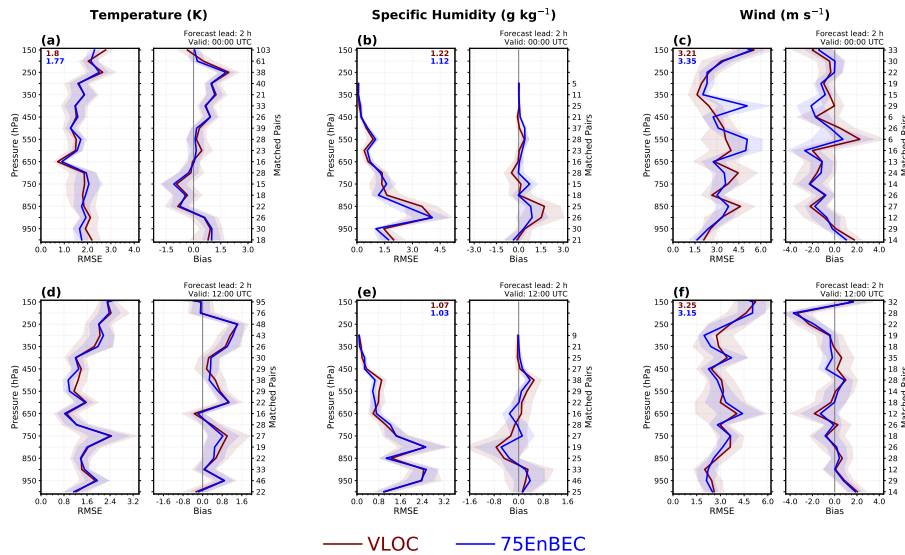


Figure 10. As in Fig. 8, but for experiments 75EnBEC and VLOC.

the late afternoon (valid hour 00:00 UTC) (Fig. 10a). At valid hour 12:00 UTC, VLOC gives a lower RMSE between 950 and 900 hPa and 350 and 300 hPa, and lower bias in the upper atmosphere between 450 and 250 hPa (Fig. 10d). For specific humidity, the RMSE and bias are improved at all levels above 650 hPa at 00:00 UTC with VLOC. However, a degradation is observed in the RMSE in the lower levels below 700 hPa. Degradation is also seen in the bias between 950 and 800 hPa (Fig. 10b). At valid 12:00 UTC, not much improvement is shown in either the RMSE or bias from VLOC (Fig. 10e). Meanwhile, a general positive impact is observed in the RMSE and bias for the winds above 650 hPa but negative impact in lower levels at 00:00 UTC valid hour. At 12:00 UTC valid hour, slight improvements are shown for VLOC in the RMSE between 650 and 500 hPa and at 400 hPa, and in the bias at 550 hPa and 350 hPa (Fig. 10f).

The change in vertical localization slightly improved the extent and intensity of convection over northeastern Oklahoma in the 2 h forecast, however an underforecast of the convection over central and eastern Oklahoma is observed in the 4 h forecast and an overforecast over north-central Arkansas and south-central Missouri is observed in the 6 h forecast (Fig. A1). While reducing the vertical localization scale did produce small improvement at some levels, degradation dominated the overall signature, indicating this variation of localization scale produces less skillful storm forecasts. It suggests a vertical ensemble localization radius of 3 layers is already a good choice if not the best.

4.3 The impact of PBL pseudo-observations

The impact of adding PBL pseudo-observations to the analysis based on surface temperature and moisture observations is evaluated in experiment PSEUDO. This function first identifies the PBL height using the background (FV3 LAM 1 h forecast). It then computes the 2 m temperature and 2 m moisture observation innovations (OmB) such that they are inserted at multiple

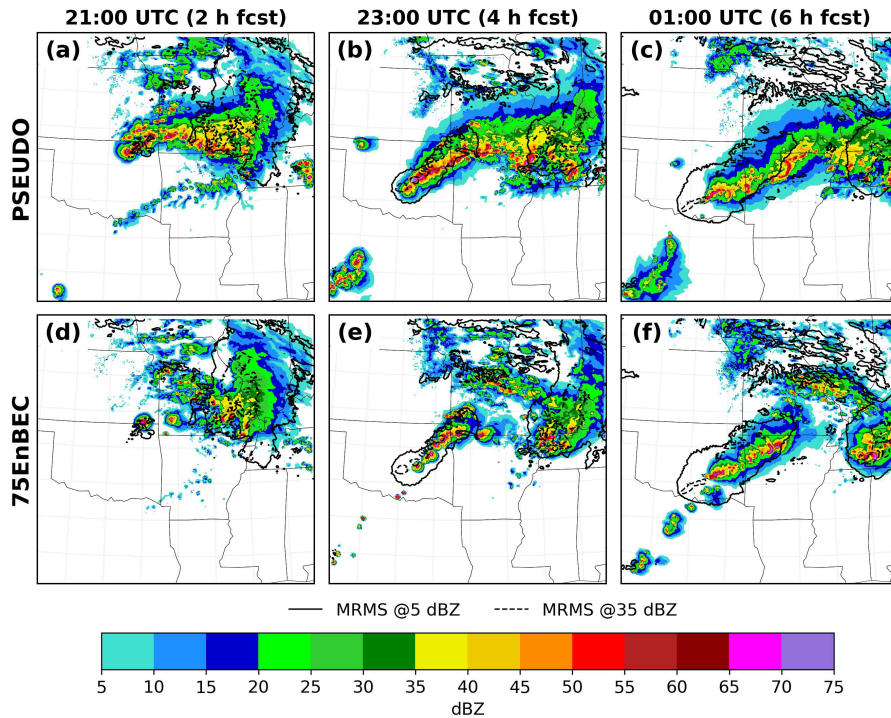


Figure 11. As in Fig. 7, but for experiments PSEUDO (a, b, and c) and 75EnBEC (d, e, and f).

vertical levels, from the surface to the level corresponding to 75 % of the PBL height and spaced every 20 hPa (Benjamin
455 et al., 2016). This technique works as if additional PBL observations are available at those levels and thus more observation
innovations can be computed. Therefore, they are called “PBL pseudo-observations”. This function is tested with the PBL
pseudo-observation configuration used in the operational RAP system.

The 2, 4, and 6 h composite reflectivity forecasts from experiments PSEUDO and 75EnBEC are presented in Fig. 11.
PSEUDO clearly predicted more convection than 75EnBEC (Fig. 11a – c). These forecasts overestimated convection in south-
460 ern Missouri, northern Arkansas, and northeastern Texas for all forecast lengths, especially at 4 and 6 h (Fig. 11b and c). Spu-
rious convection also appeared over central Arkansas, southeastern Oklahoma, and far northeastern Texas in the 2 h PSEUDO
forecast (Fig. 11a), and convective initiation was overproduced over northeastern Oklahoma and southeastern Kansas. The
squall line is not well represented in the 6 h forecast after adding PBL pseudo-observations (Fig. 11c). Nevertheless, the 4 h
forecast (Fig. 11b) in PSEUDO has a better coverage of the squall line.

465 The RMSE and bias vertical profiles for the 2 h forecast of temperature, specific humidity, and wind against sounding
observations at 00:00 UTC and 12:00 UTC valid hours are presented in Fig. 12. The use of PBL pseudo-observations gives
clear negative impacts at both valid hours and most vertical levels for the RMSE and bias of temperature and specific humidity
(Fig. 12a, b, d, and e). For wind, the bias shows more promising results with a positive impact for almost the entire atmosphere

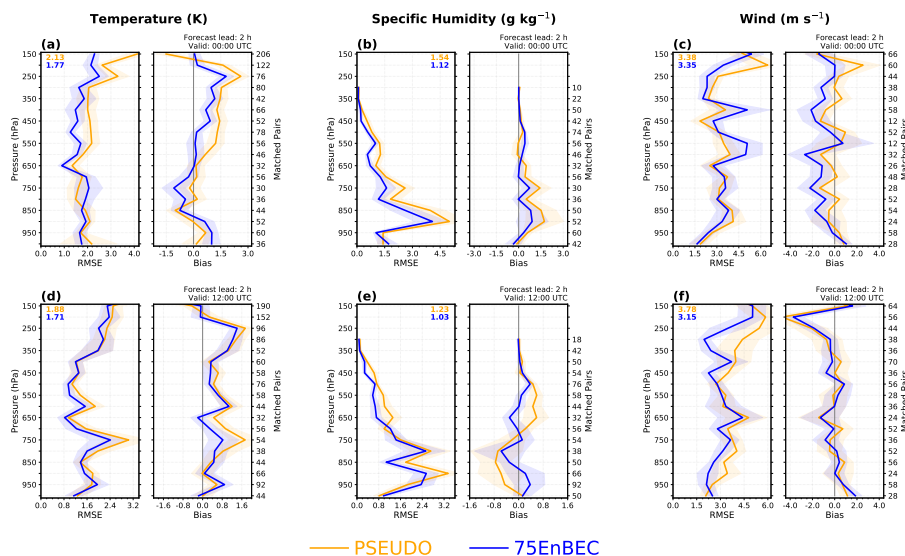


Figure 12. As in Fig. 8, but for experiments 75EnBEC and PSEUDO.

at late afternoon hours (valid hour 00:00 UTC) (Fig. 12c), but at 12:00 UTC valid hour (Fig. 12f) the wind RMSE clearly shows an advantage of 75EnBEC over VLOC at almost all vertical levels.

Unlike upper air verification, the surface RMSE and bias of 2 m dew point temperature for the 2 h forecast in PSEUDO show substantial improvements between cycles initialized at 12:00 UTC on 4 May 2020 and 00:00 UTC on 5 May 2020 (Fig. 13b). A reduction of almost 1.6 K is shown for both statistics in the cycle initialized at 19:00 UTC. The RMSE and bias of 2 m temperature for the 2 h forecast also show improvements during the afternoon hours, but with less magnitude. A degradation in RMSE is observed between cycles initialized at 21:00 UTC and 00:00 UTC (Fig. 13a). Clearly, adding PBL pseudo-observations mitigates near surface dry and warm bias during afternoon hours, but overforecasts the storm and makes upper air forecasts worse. More tuning and testing of this function are needed before applying this technique in the RRFs.

4.4 The impact of supersaturation removal

GSI has a function to remove supersaturation in the background by capping specific humidity to its saturation value in each outer loop during the minimization of the cost function, as calculated using the background fields (CIMSS, 2014). Figure 14 shows the difference in the specific humidity (g kg^{-1}) analyses between the 75EnBEC analysis and the 75EnBEC analysis with the supersaturation clipping function activated (75EnBEC vs. CLIPSAT) for the 19:00 UTC cycle on 4 May 2020. Since more moisture is present in the lower atmosphere, model level 50 (located in the lower atmosphere) was selected to show this result. Positive (negative) differences in Fig. 14 indicate that more (less) specific humidity is found in the 75EnBEC analysis than in CLIPSAT. The figure suggests that supersaturation is removed in the CLIPSAT analysis mostly over southwestern and

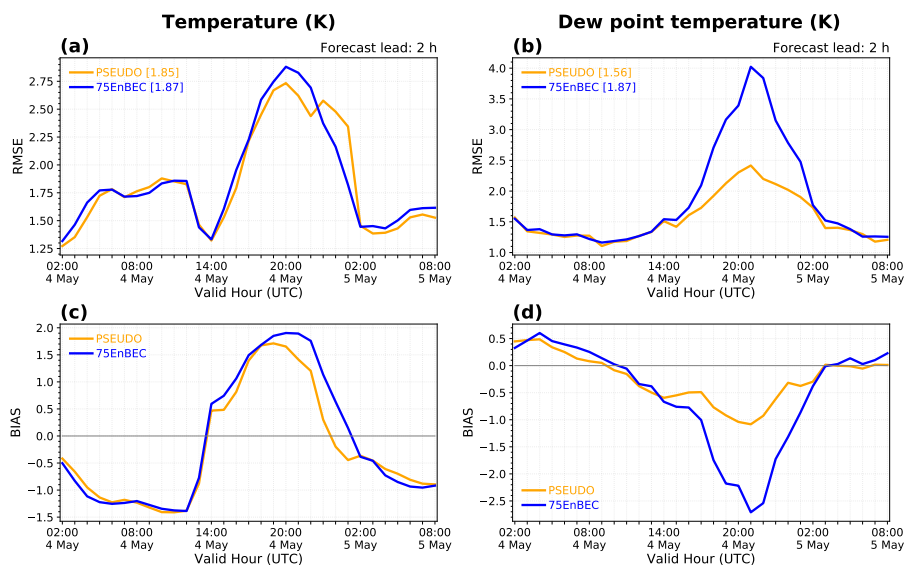


Figure 13. As in Fig. 9, but for experiments 75EnBEC and PSEUDO.

northwestern Missouri, southeastern Kansas, northern Arkansas and Oklahoma. It is worth mentioning that the computational run time of the analyses in CLIPSAT was quite similar to 75EnBEC (not shown).

The 2, 4, and 6 h composite reflectivity forecasts are shown in Fig. 15 for experiments CLIPSAT and 75EnBEC. When the supersaturation removal function is activated in the analyses, a better evolution of the squall line is observed in the 4 and 6 h
490 forecasts (Fig. 15b and c). The displacement errors are reduced and less spurious convection is seen over southern Missouri and northern Arkansas at these forecast hours (Fig. 15b, c, e, and f). As seen in Fig. 14, over these areas the CLIPSAT analysis showed less specific humidity content than in 75EnBEC. However, less spatial coverage of the convection is forecast over eastern Missouri, and the spurious convection is increased over southwestern Missouri at the 2 h forecast in CLIPSAT when compared to 75EnBEC (Fig. 15a and d).

495 4.5 Quantitative Precipitation Forecast Verification

To further evaluate the experiments conducted, the FV3 LAM 1 h accumulated precipitation is also analyzed. Precipitation forecasts remain a challenge for NWP models at various spatial and temporal scales. Because of their complexity, precipitation forecasts are frequently used to evaluate model performance.

As mentioned in Sect. 3.4, precipitation forecasts are verified against Stage IV precipitation observations at various thresh-
500 olds. Figure 16 shows the equitable threat score (ETS) and frequency bias (FBIAS) for 1 h accumulated precipitation greater than 0.01 inches h^{-1} (Fig. 16a and c) and 0.25 inches h^{-1} (Fig. 16b and d) for all experiments at each forecast lead hour. These verification measures are based on the two-by-two contingency table used for categorical (dichotomous) variables (e.g Jensen et al., 2020). ETS is based on the threat score or critical success index and is commonly used to examine the performance of

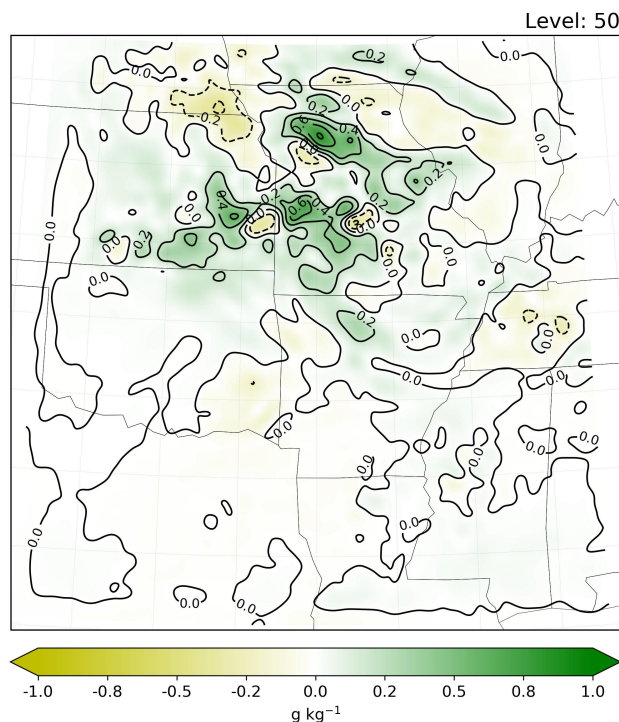


Figure 14. Difference in specific humidity (g kg^{-1}) fields for the 19:00 UTC cycle on 4 May 2020 between analyses without and with supersaturation clipping activated (75EnBEC - CS), at model level 50.

precipitation forecasts. Perfect forecasts have ETS values close to 1, while forecasts without skill have ETS values close to 0.
505 Meanwhile, FBIAS indicates when an event is forecast more or less often than it is observed. FBIAS greater than 1 indicates an event is overforecast, while less than 1 suggests an event is underforecast. An FBIAS equal to 1 indicates that the event is predicted as frequently as it is observed (e.g Wilks, 2006).

For this case study, ETS values decrease as the precipitation threshold increases in all of the experiments assessed (Fig. 16a and b), indicating the difficulty in predicting heavier precipitation events. Most of the experiments with data assimilation
510 have higher ETS scores for precipitation greater than $0.01 \text{ inches h}^{-1}$ than NoDA during almost the entire 18 hour forecast (Fig. 16a). This shows the positive impact of data assimilation in the analyses and subsequent lighter precipitation forecasts. However, and unsurprisingly, experiment PSEUDO stands out with the lowest forecast performance between 5 h and 17 h forecast. Experiments 100EnBEC, CLIPSAT, and 75EnBEC show higher ETS values in the first 4 hours of the forecast. Between 4 h and 16 h forecast, experiment CLIPSAT shows the best performance among all experiments, followed by 75EnBEC
515 and 100EnBEC. In terms of FBIAS, 100EnBEC shows better scores until the 11 h forecast lead (Fig.16c). Between 2 and 8 h forecast, Experiment VLOC shows the largest underforecast among all experiments. PSEUDO overforecasts the lighter precipitation in the first 5 h forecast and underforecasts it after the 13 h lead (Fig. 16c). The verification of 1 h accumulated precipitation greater than 0.25 inches consistently shows the poor performance of PSEUDO in both measures (Fig. 16b and

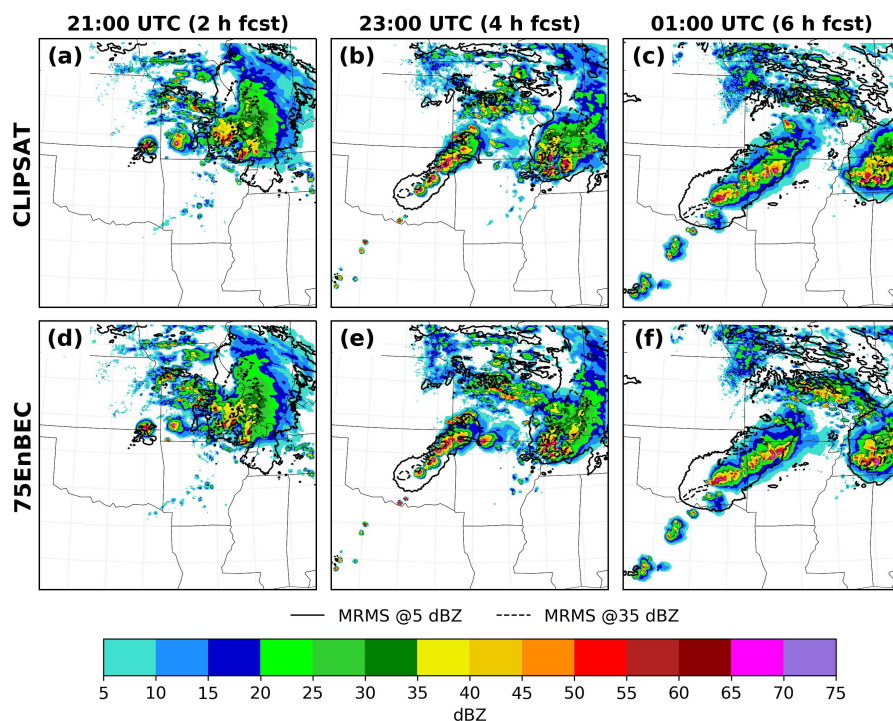


Figure 15. As in Fig. 7, but for experiments CLIPSAT (a, b, and c) and 75EnBEC (d, e, and f).

d). PSEUDO has very low ETS scores for this threshold during almost all the forecast hours and overproduces the precipitation forecasts until the 11 h forecast lead. These results support the conclusion that further testing of this function in GSI is needed to be used in RRFs. Using hybrid and pure ensemble BEC in data assimilation improves the precipitation forecasts by more than 0.25 inches h^{-1} in the first 13 hours forecast, with 75EnBEC outperforming 100EnBEC within the first four hours (Fig. 16b). After the 13 h forecast, experiment NoDA performs better, which shows data assimilation mainly improves the short term forecast and the major factor for a good long term forecast is the quality of the background from the outside model as well as the FV3 LAM model itself. In addition to PSEUDO, for the 0.25 inches threshold, precipitation is overforecast in experiments 100EnBEC and NoDA in the first 3 hours, underforecast in experiments 3DVar, 75EnBEC, VLOC, and CLIPSAT. All experiments underforecast accumulated precipitation greater than 0.25 inches after the 10 h forecast (Fig. 16d).

5 Summary and final remarks

The capability of a prototype RRFs, the RRFs v0.1, with data assimilation to simulate convection is investigated through a case study of a squall line that occurred over Oklahoma during the afternoon of 4 May 2020. Various data assimilation parameters and algorithms were tested and evaluated in order to find the best configuration to produce more realistic convection forecasts. This case study shows that the FV3 LAM with the RRFsv1a physics suite has good potential for storm forecasts. Overall, the

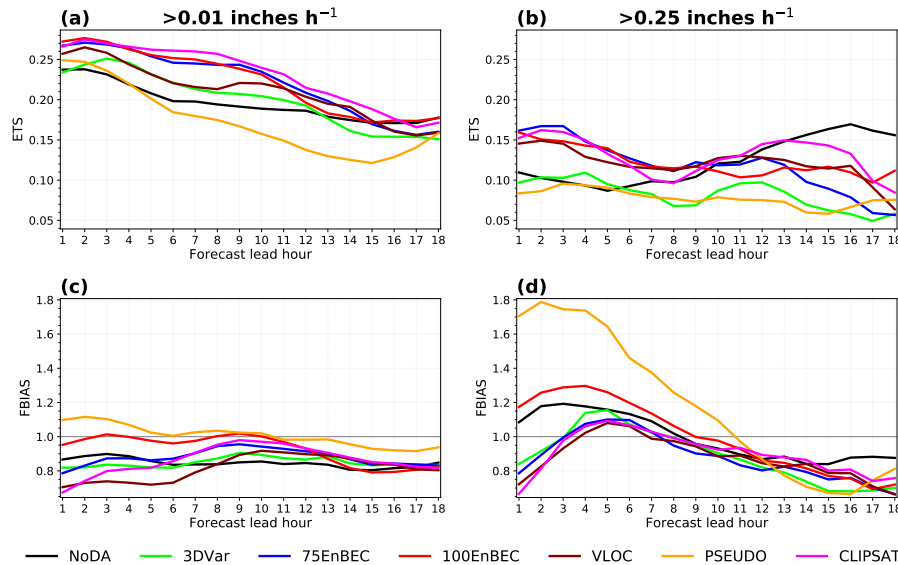


Figure 16. ETS (a and b) and FBIAS (c and d) for 1 h accumulated precipitation forecasts greater than 0.01 inches (a and c) and 0.25 inches (b and d) from experiments CLIPSAT, PSEUDO, VLOC, 100EnBEC, 75EnBEC, 3DVar, and NoDA for 18 hour forecasts.

configurations tested are able to capture the main characteristics of the major convective systems during the execution period. However, the convection in the RRFS v0.1 tends to be overestimated in intensity and underestimated in its extent, as found in
535 previous studies on FV3-based convection-allowing models (e.g, Tong et al., 2020; Gallo et al., 2021).

As expected, data assimilation makes the analyses fit the observations more closely in all cycles. However, the RMS errors of the OmB show distinguishable spikes in cycles where FV3 LAM 1 h forecasts are initialized from an external model as background for the analyses, which indicates the FV3 LAM is still under spin-up in this situation. Therefore, a cycling configuration including a spin-up period for cycles using external model forecasts may be considered. At present, work is
540 underway at NOAA’s Global Systems Laboratory (GSL) and EMC to determine the best cycling strategy for this system.

The data assimilation configurations tested show different impacts to the storm forecasts in terms of the squall line location, orientation and coverage, but experiments with data assimilation show an overall positive impact compared with the experiment without data assimilation. The data assimilation using pure ensemble BEC (100EnBEC) performs better at 2 h forecasts for the storms, but 75 % ensemble BEC (75EnBEC) produces better forecasts in all forecast lengths with a better positioning of the
545 squall line evolution, especially at 4 h forecast. Lower RMSE and bias are also found in experiment 75EnBEC for the analyzed surface variables and most vertical profiles.

Reducing the vertical localization from 3 layers to 1 layer in the lowest 10 layers of the analysis grid leads to, in general, a less skillful forecast. This suggests that the vertical localization configuration used in RAP is already a good choice and should be used in RRFS. Nevertheless, the RMSE and bias of the 2 h forecast of specific humidity are reduced above 600 hPa at



550 00:00 UTC valid hour in experiment VLOC as compared with 75EnBEC. In addition, as compared to 75EnBEC, the negative bias presents at 1000 hPa in specific humidity and temperature is improved in VLOC.

Convection is greatly overpredicted when using PBL pseudo-observations from surface 2 m temperature and 2 m moisture observations based on RAP configurations. The 1 h accumulated precipitation in PSEUDO also depicts this characteristic for most of the forecast hours. The verification of the temperature, specific humidity, and wind vertical profiles show an overall
555 degradation in the skill of the forecasts. However, the RMSE and bias of the 2 h forecast of 2 m dew point temperature and temperature are improved during the afternoon hours. A reduction in the RMSE and bias up to 1.6 K is found for the 2 m dew point temperature during these hours. The test of PBL pseudo-observations in this study suggests that more tuning and testing of this function is needed before application in RRFS.

Supersaturation clipping in GSI can improve specific humidity fields in the analyses, allowing for more realistic storm and
560 precipitation forecasts at longer forecast lengths. At shorter forecast lead hours, it produces more spurious convection but precipitation forecasts are as skillful as in experiments 75EnBEC and 100EnBEC. Although this function imposes a nonphysical constraint to remove the supersaturation from the background when minimizing the cost function, it leads to overall more skillful forecasts without an increase in the computational cost. These results agree with what is found in previous studies, in which the use of constraints in the analyses led to more skillful forecasts (e.g., Tong et al., 2016, using a divergence constraint).
565 This is a common practice in order to preserve non-negativity in the analyses but also comes at the cost of violating mass conservation (e.g., Janjić et al., 2014, 2021).

FV3 LAM hourly accumulated precipitation forecasts for different thresholds indicate that heavier precipitation (>0.25 inches (6.35 mm)) is more difficult to predict than light precipitation (>0.01 inches (0.254 mm)). The data assimilation clearly improved precipitation forecasts up to 13 h for both thresholds analyzed. The experiment using 100 % ensemble BEC showed
570 the best 1 h accumulated precipitation forecast quality in the first 4 hours forecast for lighter precipitation, while experiment 75EnBEC performed better for 1 h accumulated precipitation greater than 0.25 inches

Though this is a single case of squall line and RRFS components are under development, this study provides valuable insights into the performance of the RRFS v0.1 with diverse configurations. More extensive testing of RRFS, covering a wider variety of cases, larger domain, and longer period of time, is needed to demonstrate whether results found here are robust or may be
575 case dependent. Although further testing and evaluation are warranted in addition to the options tested here, data assimilation proves to be crucial to improve short term forecasts of storms and precipitation in RRFS.

Code and data availability. The source code repository of the SRW version 1.0.0 is available at <https://github.com/ufs-community/ufs-srweather-app> (last access: 22 January 2021). The source code of the GSI analysis system used can be found at <https://github.com/NOAA-EMC/GSI>, branch `gsi_fv3reg4coldstart` (last access: 26 June 2020). The frozen versions of the codes that comprises RRFS v0.1 can be found at:
580 <https://doi.org/10.5281/zenodo.5546592>. As the RRFS is under development, the codes of the different components are constantly evolving. Therefore, for up to date and supported codes, readers are recommended to go to the appropriate GitHub repositories. The MET v9.0.0 source code can be found at https://github.com/dtcenter/MET/tree/main_v9.0. ICs, LBCs, and RAP observations used to perform the experiments

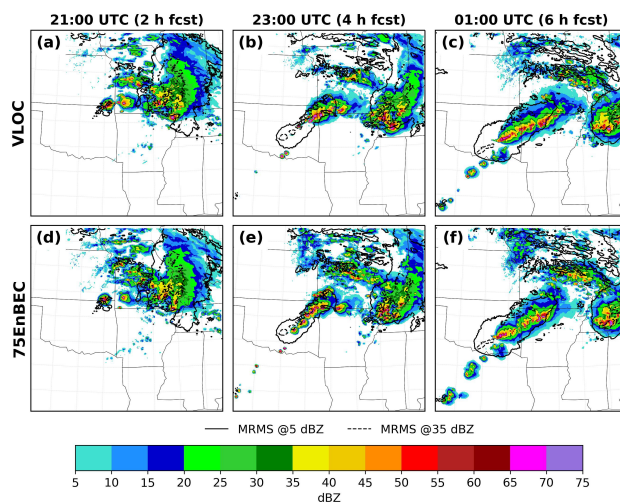


Figure A1. 2, 4, and 6 h composite reflectivity forecasts from experiments 75EnBEC (a, b, and c) and VLOC (d, e, and f), initialized at 19:00 UTC 4 May 2020. Solid and dashed black lines are the 5 and 35 dBZ MRMS observation contours, respectively.

and verify the forecasts were obtained from NOAA's High Performance Storage System (HPSS) archives. Stage IV precipitation observations were downloaded from the NCAR Earth Observing Laboratory data server at https://data.eol.ucar.edu/cgi-bin/codiac/fgr_form/id=21.093 (last access: 2 December 2020). Hourly MRMS composite reflectivity mosaic (optimal method) observations are available on the Iowa Environmental Mesonet archives at <https://mesonet.agron.iastate.edu/archive/> (last access: 27 February 2021). Storm reports were obtained from the SPC archives available at https://www.spc.noaa.gov/climo/reports/200504_rpts.html (last access: 14 July 2021). The namelist files used for cold or warm start the model, for the analyses in each experiment, and for the generation of the model grid, topography and surface climatology are provided online along with the model configuration file, the file used in the analyses to read the horizontal and vertical scales from an external file, all scripts used to execute every task of the workflow, all scripts used to process model outputs with MET, as well as all scripts and data used to create all figures of the paper, via Zenodo (<https://doi.org/10.5281/zenodo.5226389>, Banos et al., 2021).

Appendix A: Appendix A

Author contributions. IHB set up and performed the simulations, verification and visualization, conducted the analysis, and prepared the original draft of the manuscript. WM and GG helped to obtain the initial and lateral boundary conditions and observational data. GG provided advice on the selection and organization of results and analyses. WM, LFS, and LN provided advice on the verification metrics and the analyses. JRC and LFS helped to conceive the initial idea of this research. All authors read, edited, and approved the final manuscript.

Competing interests. The authors declare that they have no conflict of interest.



Acknowledgements. The authors acknowledge the efforts of many partners at NOAA and NCAR, such as at GFDL, EMC, GSL, and DTC, in developing the RRFS and each of its components, the GSI analysis system, and the MET package. NOAA and NCAR are also thanked for providing access to the computational resources and data used for the development of this research. The authors also thank Eric Gilleland, Michelle Harrold, and Lindsay Blank for their recommendations on using MET tools and help with statistical discussions. The authors are grateful to Chong-Chi Tong for providing a detailed review of the manuscript before submission and fruitful discussions on the analyses of results.

Support for this research was provided by the DTC through the DTC Visitor Program. The DTC Visitor Program is funded by NOAA, NCAR, and the National Science Foundation. The first author received support from the CAPES (acronym in Portuguese for Coordination for the Improvement of Higher Education Personnel) through a doctoral scholarship and financial support - Finance Code 001. The third author was supported in part by the NOAA Cooperative Agreement with CIRES, NA17OAR4320101.



References

- Alexander, C. and Carley, J.: Short-Range Weather in operations, *Bulletin of the UFS Community*, p. 9, <https://doi.org/doi.org/10.25923/k3zn-xe66>, 2020.
- Alpert, J. C., Yudin, V. A., and Strobach, E.: Atmospheric Gravity Wave Sources Correlated with Resolved-scale GW Activity and Sub-grid Scale Parameterization in the FV3gfs Model, in: *AGU Fall Meeting Abstracts*, vol. 2019, pp. SA21A–02, 2019.
- Bannister, R. N.: A review of operational methods of variational and ensemble-variational data assimilation, *Quarterly Journal of the Royal Meteorological Society*, 143, 607–633, <https://doi.org/https://doi.org/10.1002/qj.2982>, 2017.
- 615 Bannister, R. N., Chipilski, H. G., and Martinez-Alvarado, O.: Techniques and challenges in the assimilation of atmospheric water observations for numerical weather prediction towards convective scales, *Quarterly Journal of the Royal Meteorological Society*, 146, 1–48, <https://doi.org/https://doi.org/10.1002/qj.3652>, 2020.
- Bathmann, K.: The GSI Minimization Code Structure, https://github.com/NOAA-EMC/GSI/wiki/GSI_Minimization_Code_Explained.pdf, 2021.
- 620 Bauer, P., Thorpe, A., and Brunet, G.: The quiet revolution of numerical weather prediction, *Nature*, 525, 47–55, <https://doi.org/10.1038/nature14956>, 2015.
- Benjamin, S. G., Weygandt, S. S., Devenyi, D., Manikin, J. B. G., Smith, T., and Smirnova, T.: Improved moisture and PBL initialization in the RUC using METAR data, in: *Preprints 22th Conf. Severe Local Storms*, 2004.
- Benjamin, S. G., Jamison, B. D., Moninger, W. R., Sahm, S. R., Schwartz, B. E., and Schlatter, T. W.: Relative Short-Range Forecast Impact from Aircraft, Profiler, Radiosonde, VAD, GPS-PW, METAR, and Mesonet Observations via the RUC Hourly Assimilation Cycle, *Monthly Weather Review*, 138, 1319 – 1343, <https://doi.org/10.1175/2009MWR3097.1>, 2010.
- 625 Benjamin, S. G., Weygandt, S. S., Brown, J. M., Hu, M., Alexander, C. R., Smirnova, T. G., Olson, J. B., James, E. P., Dowell, D. C., Grell, G. A., et al.: A North American hourly assimilation and model forecast cycle: The Rapid Refresh, *Monthly Weather Review*, 144, 1669–1694, <https://journals.ametsoc.org/view/journals/mwr/144/4/mwr-d-15-0242.1.xml>, 2016.
- 630 Benjamin, S. G., James, E. P., Brown, J. M., Szoke, E. J., Kenyon, J. S., and Ahmadov, R.: Diagnostic fields developed for hourly updated NOAA weather models, NOAA Technical Memorandum OAR GSL-66, <https://doi.org/https://doi.org/10.25923/98fy-xx71>, 2020.
- Benjamin, S. G., James, E. P., Hu, M., Alexander, C. R., Ladwig, T. T., Brown, J. M., Weygandt, S. S., Turner, D. D., Minnis, P., Smith Jr, W. L., et al.: Stratiform Cloud-Hydrometeor Assimilation for HRRR and RAP Model Short-Range Weather Prediction, *Monthly Weather Review*, <https://doi.org/https://doi.org/10.1175/MWR-D-20-0319.1>, 2021.
- 635 Bernardet, L., Firl, G., Heinzeller, D., Carson, L., Sun, X., Pan, L., and Zhang, M.: Engaging the Community in the Development of Physics for NWP Models, in: *EGU General Assembly Conference Abstracts*, p. 22093, <https://ui.adsabs.harvard.edu/abs/2020EGUGA..2222093B>, 2020.
- Black, T., Abeles, J., Blake, B., Jovic, D., Rogers, E., Zhang, X., Aligo, E., Dawson, L., Lin, Y., Strobach, E., et al.: A Limited Area Modeling Capability for the Finite-Volume Cubed-Sphere (FV3) Dynamical Core and Comparison with a Global Two-Way Nest, *Journal of Advances in Modeling Earth Systems*, p. e2021MS002483, 2021.
- 640 Brousseau, P., Berre, L., Bouttier, F., and Desroziers, G.: Flow-dependent background-error covariances for a convective-scale data assimilation system, *Quarterly Journal of the Royal Meteorological Society*, 138, 310–322, <https://doi.org/https://doi.org/10.1002/qj.920>, 2012.



- Brown, A., Milton, S., Cullen, M., Golding, B., Mitchell, J., and Shelly, A.: Unified modeling and prediction of weather and climate: A 25-year journey, *Bulletin of the American Meteorological Society*, 93, 1865–1877, <https://journals.ametsoc.org/view/journals/bams/93/12/bams-d-12-00018.1.xml>, 2012.
- 645 Brown, B., Jensen, T., Gotway, J. H., Bullock, R., Gilleland, E., Fowler, T., Newman, K., Adriaansen, D., Blank, L., Burek, T., Harold, M., Hertneck, T., Kalb, C., Kucera, P., Nance, L., Opatz, J., Vigh, J., and Wolff, J.: The Model Evaluation Tools (MET): More than a Decade of Community-Supported Forecast Verification, *Bulletin of the American Meteorological Society*, 102, E782 – E807, <https://doi.org/10.1175/BAMS-D-19-0093.1>, 2021.
- 650 Buehner, M.: Ensemble-derived stationary and flow-dependent background-error covariances: Evaluation in a quasi-operational NWP setting, *Quart. J. Roy. Meteor. Soc.*, 131, 1013–1043, <https://doi.org/10.1256/qj.04.15>, 2005.
- Campbell, W. F., Bishop, C. H., and Hodyss, D.: Vertical covariance localization for satellite radiances in ensemble Kalman filters, *Monthly Weather Review*, 138, 282–290, 2010.
- Carley, J. R., Matthews, M., Morris, M. T., De Poncena, M. S. F. V., Colavito, J., and Yang, R.: Variational assimilation of web camera-derived estimates of visibility for Alaska aviation, *Experimental Results*, 2, e14, <https://doi.org/10.1017/exp.2020.66>, 2021.
- 655 Chen, L., Liu, C., Xue, M., Zhao, G., Kong, R., and Jung, Y.: Use of Power Transform Mixing Ratios as Hydrometeor Control Variables for Direct Assimilation of Radar Reflectivity in GSI En3DVar and Tests with Five Convective Storm Cases, *Monthly Weather Review*, 149, 645–659, 2021.
- CIMSS: CIMSS Cooperative Agreement Annual Report, Tech. Rep. April, Cooperative Institute for Meteorological Satellite Studies University of Wisconsin-Madison, https://cimss.ssec.wisc.edu/reports/CIMSS-CA-Report_2014_Final.pdf, 2014.
- 660 Derber, J. and Rosati, A.: A global oceanic data assimilation system, *Journal of physical oceanography*, 19, 1333–1347, 1989.
- Dixon, M., Li, Z., Lean, H., Roberts, N., and Ballard, S.: Impact of Data Assimilation on Forecasting Convection over the United Kingdom Using a High-Resolution Version of the Met Office Unified Model, *Monthly Weather Review*, 137, 1562–1584, <https://doi.org/10.1175/2008MWR2561.1>, 2009.
- 665 Dong, J., Liu, B., Zhang, Z., Wang, W., Mehra, A., Hazelton, A. T., Winterbottom, H. R., Zhu, L., Wu, K., Zhang, C., et al.: The evaluation of real-time Hurricane Analysis and Forecast System (HAFS) Stand-Alone Regional (SAR) model performance for the 2019 Atlantic hurricane season, *Atmosphere*, 11, 617, 2020.
- EMC: Strategic Implementation Plan for evolution of NGGPS to a national Unified Modeling System (First Annual Update), Tech. Rep. November, NOAA, U.S., https://www.weather.gov/media/sti/nggps/UFS%20SIP%20FY19-21_20181129.pdf, 2018.
- 670 Gallo, B. T., Wolff, J. K., Clark, A. J., Jirak, I., Blank, L. R., Roberts, B., Wang, Y., Zhang, C., Xue, M., Supinie, T., et al.: Exploring Convection-Allowing Model Evaluation Strategies for Severe Local Storms Using the Finite-Volume Cubed-Sphere (FV3) Model Core, *Weather and Forecasting*, 36, 3–19, 2021.
- Gao, S., Du, N., Min, J., and Yu, H.: Impact of assimilating radar data using a hybrid 4DEnVar approach on prediction of convective events, *Tellus A: Dynamic Meteorology and Oceanography*, 73, 1–19, 2021.
- 675 Gustafsson, N., Janji, T., Schraff, C., Leuenberger, D., Weissman, M., Reich, H., Brousseau, P., Montmerle, T., Wattrelot, E., Bučánek, A., Mile, M., Hamdi, R., Lindskog, M., Barkmeijer, J., Dahlbom, M., Macpherson, B., Ballard, S., Inverarity, G., Carley, J., Alexander, C., Dowell, D., Liu, S., Ikuta, Y., and Fujita, T.: Survey of data assimilation methods for convective-scale numerical weather prediction at operational centres, *Quarterly Journal of the Royal Meteorological Society*, 144, 1218–1256, <https://doi.org/10.1002/qj.3179>, 2018.



- Hamill, T. M., Whitaker, J. S., and Snyder, C.: Distance-dependent filtering of background error covariance estimates in an ensemble Kalman filter, *Monthly Weather Review*, 129, 2776–2790, https://journals.ametsoc.org/view/journals/mwre/129/11/1520-0493_2001_129_2776_ddfobe_2.0.co_2.xml, 2001.
- Harris, L., Chen, X., Zhou, L., and Chen, J.-H.: The Nonhydrostatic Solver of the GFDL Finite-Volume Cubed-Sphere Dynamical Core, NOAA Technical Memorandum OAR GFDL, 2020-003, <https://doi.org/https://doi.org/10.25923/9wdt-4895>, 2020a.
- Harris, L., Zhou, L., Lin, S.-J., Chen, J.-H., Chen, X., Gao, K., Morin, M., Rees, S., Sun, Y., Tong, M., et al.: GFDL SHiELD: A unified system for weather-to-seasonal prediction, *Journal of Advances in Modeling Earth Systems*, 12, e2020MS002 223, 2020b.
- Harris, L. M. and Lin, S.-J.: A two-way nested global-regional dynamical core on the cubed-sphere grid, *Monthly Weather Review*, 141, 283–306, <https://journals.ametsoc.org/view/journals/mwre/141/1/mwr-d-11-00201.1.xml>, 2013.
- Harris, L. M., Lin, S.-J., and Tu, C.: High-Resolution Climate Simulations Using GFDL HiRAM with a Stretched Global Grid, *Journal of Climate*, 29, 4293–4314, <https://doi.org/10.1175/JCLI-D-15-0389.1>, 2016.
- Harris, L. M., Rees, S. L., Morin, M., Zhou, L., and Stern, W. F.: Explicit prediction of continental convection in a skillful variable resolution global model, *Journal of Advances in Modeling Earth Systems*, 11, 1847–1869, <https://doi.org/10.1029/2018MS001542>, 2019.
- Harrold, M., Hertneky, T., Kalina, E., Newman, K., Ketefian, G., Grell, E. D., Lybarger, N. D., and Nelson, B.: Investigating the Scalability of Convective and Microphysics Parameterizations in the Unified Forecast System Short-Range Weather (UFS-SRW) Application, in: 101st American Meteorological Society Annual Meeting, AMS, 2021.
- Hazeleger, W., Severijns, C., Semmler, T., Ștefănescu, S., Yang, S., Wang, X., Wyser, K., Dutra, E., Baldasano, J. M., Bintanja, R., et al.: EC-Earth: a seamless earth-system prediction approach in action, *Bulletin of the American Meteorological Society*, 91, 1357–1364, https://journals.ametsoc.org/view/journals/bams/91/10/2010bams2877_1.xml, 2010.
- Heinzeller, D., Bernardet, L., Firl, G., Carson, L., Schramm, J., Zhang, M., Dudhia, J., Gill, D., Duda, M., Goldhaber, S., Craig, C., Vitt, F., and Vertenstein, M.: The Common Community Physics Package CCpp: unifying physics across NOAA and NCAR models using a common software framework, in: EGU General Assembly Conference Abstracts, p. 223, <https://ui.adsabs.harvard.edu/abs/2019EGUGA..21..223H>, 2019.
- Holm, E., Andersson, E., Beljaars, A., Lopez, P., Mahfouf, J.-F., Simmons, A., and Thepaut, J.-N.: Assimilation and modelling of the hydrologic cycle: ECMWF's status and plans, *ECMWF Tech. Memo.*, 383, 55, 2002.
- Houtekamer, P. L. and Mitchell, H. L.: A sequential ensemble Kalman filter for atmospheric data assimilation, *Monthly Weather Review*, 129, 123–137, 2001.
- Hu, M., Xue, M., and Brewster, K.: 3DVAR and Cloud Analysis with WSR-88D Level-II Data for the Prediction of the Fort Worth, Texas, Tornadoic Thunderstorms. Part I: Cloud Analysis and Its Impact, *Monthly Weather Review*, 134, 675–698, <https://doi.org/10.1175/mwr3092.1>, 2006a.
- Hu, M., Xue, M., Gao, J., and Brewster, K.: 3DVAR and Cloud Analysis with WSR-88D Level-II Data for the Prediction of the Fort Worth, Texas, Tornadoic Thunderstorms. Part II: Impact of Radial Velocity Analysis via 3DVAR, *Monthly Weather Review*, 134, 699–721, <https://doi.org/10.1175/mwr3093.1>, 2006b.
- Hu, M., Benjamin, S. G., Ladwig, T. T., Dowell, D. C., Weygandt, S. S., Alexander, C. R., and Whitaker, J. S.: GSI three-dimensional ensemble-variational hybrid data assimilation using a global ensemble for the regional Rapid Refresh model, *Monthly Weather Review*, 145, 4205–4225, <https://journals.ametsoc.org/view/journals/mwre/145/10/mwr-d-16-0418.1.xml>, 2017.
- Hu, M., Ge, G., Chunhua, Z., Stark, D., Shao, H., Newman, K., Beck, J., and Zhang, X.: Grid-point Statistical Interpolation (GSI) User's Guide version 3.7, https://dtcenter.org/sites/default/files/GSIUserGuide_v3.7_0.pdf, 2018.



- Hu, M., Li, R., Trahan, S., Holt, C., Weygandt, S., and Alexander, C. R.: Initial Development Testing and Evaluation of the RAPHRRR Similar Data Assimilation Functions for FV3 LAM-Based RRFs, in: 101st American Meteorological Society Annual Meeting, AMS, 2021.
- 720 Iacono, M. J., Delamere, J. S., Mlawer, E. J., Shephard, M. W., Clough, S. A., and Collins, W. D.: Radiative forcing by long-lived greenhouse gases: Calculations with the AER radiative transfer models, *Journal of Geophysical Research: Atmospheres*, 113, <https://doi.org/https://doi.org/10.1029/2008JD009944>, 2008.
- Janjić, T., McLaughlin, D., Cohn, S. E., and Verlaan, M.: Conservation of Mass and Preservation of Positivity with Ensemble-Type Kalman Filter Algorithms, *Monthly Weather Review*, 142, 755–773, <https://doi.org/10.1175/MWR-D-13-00056.1>, 2014.
- 725 Janjić, T., Ruckstuhl, Y., and Toint, P. L.: A data assimilation algorithm for predicting rain, *Quarterly Journal of the Royal Meteorological Society*, 147, 1949–1963, 2021.
- Janjić, Z. I., Gerrity, J. P., and Nickovic, S.: An Alternative Approach to Nonhydrostatic Modeling, *Monthly Weather Review*, 129, 1164–1178, [https://doi.org/10.1175/1520-0493\(2001\)129%3C1164:Aaatnm%3E2.0.Co;2](https://doi.org/10.1175/1520-0493(2001)129%3C1164:Aaatnm%3E2.0.Co;2), 2001.
- Jensen, T., Brown, B., Bullock, R., Fowler, T., Gotway, J. H., and Newman, K.: The Model Evaluation Tools v9.0 (METv9.0) User’s Guide., Developmental Testbed Center, https://dtcenter.org/sites/default/les/community-code/met/docs/user-guide/MET_Users_Guide_v9.0.pdf, 2020.
- 730 Ji, M. and Toepfer, F.: Dynamical Core Evaluation Test Report for NOAA’s Next Generation Global Prediction System (NGGPS), Tech. Rep. September, NOAA, U.S., <https://doi.org/https://doi.org/10.25923/ztyz-qn82>, 2016.
- Kalina, E., Grell, E. D., Harrold, M., Hertnecky, T., and Newman, K.: Evaluating Hydrometeor Type and Amount in the Unified Forecast System, in: 101st American Meteorological Society Annual Meeting, AMS, 2021.
- 735 Kleist, D. and Ide, K.: An OSSE-Based Evaluation of Hybrid Variational–Ensemble Data Assimilation for the NCEP GFS. Part II: 4DEnVar and Hybrid Variants, *Mon. Wea. Rev.*, 143, 452–470, <https://doi.org/10.1175/MWR-D-13-00350.1>, 2015a.
- Kleist, D. T. and Ide, K.: An OSSE-based evaluation of hybrid variational-ensemble data assimilation for the NCEP GFS. Part I: System description and 3D-hybrid results, *Monthly Weather Review*, 143, 433–451, <https://doi.org/10.1175/MWR-D-13-00351.1>, 2015b.
- 740 Kleist, D. T. and Ide, K.: An OSSE-Based Evaluation of Hybrid Variational–Ensemble Data Assimilation for the NCEP GFS. Part II: 4DEnVar and Hybrid Variants, *Monthly Weather Review*, 143, 452–470, <https://doi.org/10.1175/mwr-d-13-00350.1>, 2015c.
- Kleist, D. T., Parrish, D. F., Derber, J. C., Treadon, R., Wu, W.-S., and Lord, S.: Introduction of the GSI into the NCEP global data assimilation system, *Weather and Forecasting*, 24, 1691–1705, https://journals.ametsoc.org/view/journals/wefo/24/6/2009waf2222201_1.xml, 2009.
- Lean, H. W., Clark, P. A., Dixon, M., Roberts, N. M., Fitch, A., Forbes, R., and Halliwell, C.: Characteristics of high-resolution versions of the Met Office Unified Model for forecasting convection over the United Kingdom, *Monthly Weather Review*, 136, 3408–3424, 2008.
- 745 Li, X., Derber, J., and Moorthi, S.: An atmosphere-ocean partially coupled data assimilation and prediction system developed within the NCEP GFS/CFS, in: EGU General Assembly Conference Abstracts, EGU General Assembly Conference Abstracts, p. 2855, 2015.
- Lin, S.-J.: A finite-volume integration method for computing pressure gradient force in general vertical coordinates, *Quarterly Journal of the Royal Meteorological Society*, 123, 1749–1762, <https://doi.org/10.1002/qj.49712354214>, 1997.
- 750 Lin, S.-J.: A “Vertically Lagrangian” Finite-Volume Dynamical Core for Global Models, *Monthly Weather Review*, 132, 2293–2307, [https://doi.org/10.1175/1520-0493\(2004\)132<2293:AVLFDC>2.0.CO;2](https://doi.org/10.1175/1520-0493(2004)132<2293:AVLFDC>2.0.CO;2), 2004.
- Lin, S.-J. and Rood, R. B.: Multidimensional Flux-Form Semi-Lagrangian Transport Schemes, *Monthly Weather Review*, 124, 2046–2070, [https://doi.org/10.1175/1520-0493\(1996\)124<2046:Mffslt>2.0.Co;2](https://doi.org/10.1175/1520-0493(1996)124<2046:Mffslt>2.0.Co;2), 1996.



- Lin, S.-J. and Rood, R. B.: An explicit flux-form semi-lagrangian shallow-water model on the sphere, *Quarterly Journal of the Royal Meteorological Society*, 123, 2477–2498, <https://doi.org/https://doi.org/10.1002/qj.49712354416>, 1997.
- 755 Lin, Y. and Mitchell, K. E.: The NCEP stage II/IV hourly precipitation analyses: Development and applications, in: 19th Conf. on Hydrology, 1.2, Amer. Meteor. Soc., <http://ams.confex.com/ams/pdfpapers/83847.pdf>, 2005.
- Link, J. S., Tolman, H. L., Bayler, E., Holt, C., Brown, C. W., Burke, P. B., Carman, J. C., Cross, S. L., Dunne, J. P., Lipton, D. W., Mariotti, A., Methot, R. D., Myers, E. P., Schneider, T. L., Grasso, M., and Robinson, K.: High-level NOAA unified modeling overview, 760 <https://doi.org/http://doi.org/10.7289/V5GB2248>, 2017.
- Lippi, D. E., Carley, J. R., and Kleist, D. T.: Improvements to the Assimilation of Doppler Radial Winds for Convection-Permitting Forecasts of a Heavy Rain Event, *Monthly Weather Review*, 147, 3609–3632, <https://doi.org/10.1175/MWR-D-18-0411.1>, 2019.
- Long, P. E.: An economical and compatible scheme for parameterizing the stable surface layer in the medium range forecast model, <https://repository.library.noaa.gov/view/noaa/11489>, miscellaneous, 1986.
- 765 Lorenc, A. C.: The potential of the ensemble Kalman filter for NWP—A comparison with 4D-Var, *Quarterly Journal of the Royal Meteorological Society: A journal of the atmospheric sciences, applied meteorology and physical oceanography*, 129, 3183–3203, 2003.
- McCaul, E. W. and Weisman, M. L.: The Sensitivity of Simulated Supercell Structure and Intensity to Variations in the Shapes of Environmental Buoyancy and Shear Profiles, *Monthly Weather Review*, 129, 664 – 687, [https://doi.org/10.1175/1520-0493\(2001\)129<0664:TSOSSS>2.0.CO;2](https://doi.org/10.1175/1520-0493(2001)129<0664:TSOSSS>2.0.CO;2), 2001.
- 770 McCormack, J., Hoppel, K., and Siskind, D.: Parameterization of middle atmospheric water vapor photochemistry for high-altitude NWP and data assimilation, *Atmospheric Chemistry and Physics*, 8, 7519–7532, <https://doi.org/https://doi.org/10.5194/acp-8-7519-2008>, 2008.
- Mlawer, E. J., Taubman, S. J., Brown, P. D., Iacono, M. J., and Clough, S. A.: Radiative transfer for inhomogeneous atmospheres: RRTM, a validated correlated-k model for the longwave, *Journal of Geophysical Research: Atmospheres*, 102, 16 663–16 682, <https://doi.org/https://doi.org/10.1029/97JD00237>, 1997.
- 775 Nakanishi, M. and Niino, H.: Development of an Improved Turbulence Closure Model for the Atmospheric Boundary Layer, *Journal of the Meteorological Society of Japan. Ser. II*, 87, 895–912, <https://doi.org/https://doi.org/10.2151/jmsj.87.895>, 2009.
- National Research Council: A National Strategy for Advancing Climate Modeling, chap. Synergies Between Weather and Climate Modeling, The National Academies Press, Washington, DC, <https://doi.org/10.17226/13430>, 2012.
- Newman, K., Grell, E. D., Kalina, E., Harrold, M., Ketefian, G., Hertneky, T., and Lybarger, N. D.: Investigation of Land–Atmosphere 780 Interactions in the Unified Forecast System Short-Range Weather (UFS-SRW) Application, in: 101st American Meteorological Society Annual Meeting, AMS, 2021.
- Niu, G.-Y., Yang, Z.-L., Mitchell, K. E., Chen, F., Ek, M. B., Barlage, M., Kumar, A., Manning, K., Niyogi, D., Rosero, E., et al.: The community Noah land surface model with multiparameterization options (Noah-MP): 1. Model description and evaluation with local-scale measurements, *Journal of Geophysical Research: Atmospheres*, 116, <https://doi.org/https://doi.org/10.1029/2010JD015139>, 2011.
- 785 NWS: Service Change Notice 21-20 Updated: Upgrade NCEP Global Forecast Systems (GFS) to v16: Effective March 22, 2021, https://www.weather.gov/media/notification/scn_21-20_gfsv16.0_aaa_update.pdf, 2021.
- Olson, J. B., Kenyon, J. S., Angevine, W. A., Brown, J. M., Pagowski, M., and Sušelj, K.: A Description of the MYNN-EDMF Scheme and the Coupling to Other Components in WRF–ARW, <https://repository.library.noaa.gov/view/noaa/19837>, technical Memorandum, 2019.
- Parrish, D. F. and Derber, J. C.: The National Meteorological Center’s Spectral Statistical-Interpolation Analysis System, *Monthly Weather 790 Review*, 120, 1747–1763, [https://doi.org/10.1175/1520-0493\(1992\)120<1747:Tnmcss>2.0.Co;2](https://doi.org/10.1175/1520-0493(1992)120<1747:Tnmcss>2.0.Co;2), 1992.



- Poterjoy, J., Sobash, R. A., and Anderson, J. L.: Convective-scale data assimilation for the weather research and forecasting model using the local particle filter, *Monthly Weather Review*, 145, 1897–1918, 2017.
- Potvin, C. K., Carley, J. R., Clark, A. J., Wicker, L. J., Skinner, P. S., Reinhart, A. E., Gallo, B. T., Kain, J. S., Romine, G. S., Aligo, E. A., Brewster, K. A., Dowell, D. C., Harris, L. M., Jirak, I. L., Kong, F., Supinie, T. A., Thomas, K. W., Wang, X., Wang, Y., and Xue, M.:
795 Systematic Comparison of Convection-Allowing Models during the 2017 NOAA HWT Spring Forecasting Experiment, *Weather and Forecasting*, 34, 1395–1416, <https://doi.org/10.1175/WAF-D-19-0056.1>, 2019.
- Purser, R. J., Wu, W.-S., Parrish, D. F., and Roberts, N. M.: Numerical aspects of the application of recursive filters to variational statistical analysis. Part I: Spatially homogeneous and isotropic Gaussian covariances, *Monthly Weather Review*, 131, 1524–1535, 2003.
- Putman, W. M. and Lin, S.-J.: Finite-volume transport on various cubed-sphere grids, *Journal of Computational Physics*, 227, 55–78, <https://doi.org/10.1016/j.jcp.2007.07.022>, 2007.
800
- Roberts, B., Gallo, B. T., Jirak, I. L., Clark, A. J., Dowell, D. C., Wang, X., and Wang, Y.: What Does a Convection-Allowing Ensemble of Opportunity Buy Us in Forecasting Thunderstorms?, *Weather and Forecasting*, 35, 2293–2316, <https://doi.org/https://doi.org/10.1175/WAF-D-20-0069.1>, 2020.
- Schwartz, C. S. and Sobash, R. A.: Revisiting sensitivity to horizontal grid spacing in convection-allowing models over the central and
805 eastern United States, *Monthly Weather Review*, 147, 4411–4435, 2019.
- Shao, H., Derber, J., Huang, X.-Y., Hu, M., Newman, K., Stark, D., Lueken, M., Zhou, C., Nance, L., Kuo, Y.-H., et al.: Bridging research to operations transitions: Status and plans of community GSI, *Bulletin of the American Meteorological Society*, 97, 1427–1440, <https://doi.org/https://doi.org/10.1175/BAMS-D-13-00245.1>, 2016.
- Shen, F., Xue, M., and Min, J.: A comparison of limited-area 3DVAR and ETKF-En3DVAR data assimilation using radar
810 observations at convective scale for the prediction of Typhoon Saomai (2006), *Meteorological Applications*, 24, 628–641, <https://doi.org/https://doi.org/10.1002/met.1663>, 2017.
- Skamarock, W. C., Klemp, J. B., Dudhia, J., Gill, D. O., Barker, D. M., Wang, W., and Powers, J. G.: A description of the Advanced Research WRF version 3. NCAR Technical note-475+ STR, Tech. rep., National Center For Atmospheric Research, Boulder CO. Mesoscale and
Microscale Meteorology Laboratory, <https://doi.org/10.5065/D68S4MVH>, 2008.
- 815 Smith, T. L., Benjamin, S. G., Gutman, S. I., and Sahn, S.: Short-range forecast impact from assimilation of GPS-IPW observations into the Rapid Update Cycle, *Monthly weather review*, 135, 2914–2930, <https://doi.org/https://doi.org/10.1175/MWR3436.1>, 2007.
- Snook, N., Kong, F., Brewster, K. A., Xue, M., Thomas, K. W., Supinie, T. A., Perfater, S., and Albright, B.: Evaluation of convection-permitting precipitation forecast products using WRF, NMMB, and FV3 for the 2016–17 NOAA hydrometeorology testbed flash flood and intense rainfall experiments, *Weather and Forecasting*, 34, 781–804, 2019.
- 820 Thompson, G. and Eidhammer, T.: A study of aerosol impacts on clouds and precipitation development in a large winter cyclone, *Journal of the atmospheric sciences*, 71, 3636–3658, <https://doi.org/https://doi.org/10.1175/JAS-D-13-0305.1>, 2014.
- Tong, C.-C., Jung, Y., Xue, M., and Liu, C.: Direct Assimilation of Radar Data With Ensemble Kalman Filter and Hybrid Ensemble-Variational Method in the National Weather Service Operational Data Assimilation System GSI for the Stand-Alone Regional FV3 Model at a Convection-Allowing Resolution, *Geophysical Research Letters*, 47, e2020GL090179, 2020.
- 825 Tong, W., Li, G., Sun, J., Tang, X., and Zhang, Y.: Design Strategies of an Hourly Update 3DVAR Data Assimilation System for Improved Convective Forecasting, *Weather and Forecasting*, 31, 1673–1695, <https://doi.org/10.1175/WAF-D-16-0041.1>, 2016.
- UFS Development Team: Unified Forecast System (UFS) Short-Range Weather (SRW) Application, <https://doi.org/10.5281/zenodo.4534994>, 2021.



- UFS-R2O: Unified Forecast System Research-to-Operations (UFS-R2O) Project Proposal, [https://www.weather.gov/media/sti/](https://www.weather.gov/media/sti/UFS-R2O-Project-Proposal-Public.pdf)
830 UFS-R2O-Project-Proposal-Public.pdf, 2020.
- UPP: UPP Users Guide V4, <https://dtcenter.org/sites/default/files/community-code/upp-users-guide-v4.pdf>, 2021.
- Wang, X.: Incorporating Ensemble Covariance in the Gridpoint Statistical Interpolation Variational Minimization: A Mathematical Framework, *Monthly Weather Review*, 138, 2990–2995, <https://doi.org/10.1175/2010mwr3245.1>, 2010.
- Wang, X. and Lei, T.: GSI-Based Four-Dimensional Ensemble–Variational (4DEnsVar) Data Assimilation: Formulation and Single-
835 Resolution Experiments with Real Data for NCEP Global Forecast System, *Monthly Weather Review*, 142, 3303–3325, <https://doi.org/10.1175/mwr-d-13-00303.1>, 2014.
- Wang, X., Parrish, D., Kleist, D., and Whitaker, J.: GSI 3DVar-Based Ensemble–Variational Hybrid Data Assimilation for NCEP Global Forecast System: Single-Resolution Experiments, *Monthly Weather Review*, 141, 4098–4117, <https://doi.org/10.1175/mwr-d-12-00141.1>, 2013.
- 840 Wang, Y. and Wang, X.: Direct Assimilation of Radar Reflectivity without Tangent Linear and Adjoint of the Nonlinear Observation Operator in the GSI-Based EnVar System: Methodology and Experiment with the 8 May 2003 Oklahoma City Tornadoic Supercell, *Monthly Weather Review*, 145, 1447–1471, <https://doi.org/10.1175/MWR-D-16-0231.1>, 2017.
- Weisman, M. L. and Klemp, J. B.: The Dependence of Numerically Simulated Convective Storms on Vertical Wind Shear and Buoyancy, *Monthly Weather Review*, 110, 504 – 520, [https://doi.org/10.1175/1520-0493\(1982\)110<0504:TDONSC>2.0.CO;2](https://doi.org/10.1175/1520-0493(1982)110<0504:TDONSC>2.0.CO;2), 1982.
- 845 Wilks, D. S.: *Statistical methods in the atmospheric sciences*, Elsevier Inc., second edi edn., 2006.
- Wolff, J. and Beck, J.: The UFS Short-Range Weather App, *Bulletin of the UFS Community*, p. 9, <https://doi.org/doi.org/10.25923/k3zn-xe66>, 2020.
- Wu, W., Purser, R. J., and Parrish, D.: Three-Dimensional Variational Analysis with Spatially Inhomogeneous Covariances, *Monthly Weather Review*, 130, 2905–2916, [https://doi.org/10.1175/1520-0493\(2002\)130<2905:TDVAWS>2.0.CO;2](https://doi.org/10.1175/1520-0493(2002)130<2905:TDVAWS>2.0.CO;2), 2002.
- 850 Wu, W.-S., Parrish, D. F., Rogers, E., and Lin, Y.: Regional Ensemble–Variational Data Assimilation Using Global Ensemble Forecasts, *Weather and Forecasting*, 32, 83–96, <https://doi.org/10.1175/waf-d-16-0045.1>, 2017.
- Xu, K.-M. and Randall, D. A.: A semiempirical cloudiness parameterization for use in climate models, *Journal of the atmospheric sciences*, 53, 3084–3102, 1996.
- Yano, J.-I., Ziemiański, M. Z., Cullen, M., Termonia, P., Onvlee, J., Bengtsson, L., Carrassi, A., Davy, R., Deluca, A., Gray, S. L., Homar, V.,
855 Kohler, M., Krichak, S., Michaelides, S., Phillips, V. T. J., Soares, P. M. M., and Wyszogrodzki, A. A.: Scientific Challenges of Convective-Scale Numerical Weather Prediction, *Bulletin of the American Meteorological Society*, 99, 699–710, <https://doi.org/10.1175/BAMS-D-17-0125.1>, 2018.
- Zhang, C., Xue, M., Supinie, T. A., Kong, F., Snook, N., Thomas, K. W., Brewster, K., Jung, Y., Harris, L. M., and Lin, S.-J.: How well does an FV3-based model predict precipitation at a convection-allowing resolution? Results from CAPS forecasts for the 2018 NOAA
860 hazardous weather test bed with different physics combinations, *Geophysical Research Letters*, 46, 3523–3531, 2019.
- Zhou, L., Lin, S.-J., Chen, J.-H., Harris, L. M., Chen, X., and Rees, S. L.: Toward Convective-Scale Prediction within the Next Generation Global Prediction System, *Bulletin of the American Meteorological Society*, 100, 1225–1243, <https://doi.org/10.1175/BAMS-D-17-0246.1>, 2019.
- Zhu, Y., Derber, J., Collard, A., Dee, D., Treadon, R., Gayno, G., and Jung, J. A.: Enhanced radiance bias correction in the National Centers
865 for Environmental Prediction’s Gridpoint Statistical Interpolation data assimilation system, *Quarterly Journal of the Royal Meteorological Society*, 140, 1479–1492, 2014.